



MANHATTAN  
THEATRE CLUB

---

2013-14 ANNUAL REPORT

## MTC'S MISSION IS...

- **To Produce** a season of innovative work with a series of productions as broad and diverse as New York itself;
- **To Encourage** significant new work by creating an environment in which writers and theatre artists are supported by the finest professionals producing theatre today;
- **To Nurture** new talent in playwriting, musical composition, directing, acting and design; and
- **To Reach** out to young audiences with innovative programs in education and maintain a commitment to cultivating the next generation of theatre professionals.



Under the dynamic leadership of Artistic Director Lynne Meadow and Executive Producer Barry Grove, Manhattan Theatre Club has grown in four and a half decades from a prolific Off-Off-Broadway showcase into one of the country's most acclaimed theatre organizations.

Founded in 1970, MTC is committed to the creation of new plays and musicals through an intensive Artistic Development Program that offers commissions, script evaluation, dramaturgical support, readings and workshops. Using the work on its stages, MTC's Education Program promotes active participation in the arts through in-class instruction, student and family matinees, teacher training, internships and internet-based distance learning. In constantly seeking new ways to innovate, MTC keeps theatre alive and relevant.



# TABLE OF CONTENTS

A message from our Artistic Director and Executive Producer.....	4
A message from our Board Leaders .....	6
Board of Directors .....	8
MTC’s 2013-14 Season .....	9
<b>At The Samuel J. Friedman Theatre</b>	
<i>The Snow Geese</i> .....	10
<i>Outside Mullingar</i> .....	12
<i>Casa Valentina</i> .....	14
<b>At New York City Center, Stage I</b>	
<i>The Commons of Pensacola</i> .....	16
<i>Tales From Red Vienna</i> .....	18
<i>When We Were Young and Unafraid</i> .....	20
<b>At New York City Center, Stage II</b>	
<i>Taking Care of Baby</i> .....	22
<i>The Lion</i> .....	24
<i>The Studio at Stage II - Harold and Mimi Steinberg New Play Series</i> .....	26
Artistic Development Program .....	27
Education Program .....	30
<b>2013-14 Supporters:</b>	
<b>More to Come Campaign</b> .....	33
<b>Patron Program</b> .....	34
<b>2014 Winter Benefit</b> .....	35
<b>2014 Spring Gala</b> .....	36
<b>Institutional Support</b> .....	38
<b>Individual Support</b> .....	40
Audited Financial Statement .....	51
Looking Ahead to the 2014-15 Season .....	54

# FROM OUR ARTISTIC DIRECTOR AND EXECUTIVE PRODUCER

Dear Friends,

The 2013-14 season was one of tremendous activity and acclaim for MTC, highlighted by outstanding work from both new and longtime collaborators. We produced eight plays, including six world premieres and two American premieres; we celebrated our 10<sup>th</sup> season on Broadway at the landmark Samuel J. Friedman Theatre; and we were honored to have our productions be nominated for five Tony Awards, including two for Best Play. Off stage we continued our important artistic development and educational efforts, including a reimagined public play reading series and the exciting launch of a new theatre program to serve court-involved youth.



Executive Producer Barry Grove and Artistic Director Lynne Meadow

On Broadway at the Samuel J. Friedman Theatre, MTC was delighted to welcome back Sharr White to open our season with the world premiere of *The Snow Geese*, which starred Tony and Emmy award winner Mary-Louise Parker, directed by Tony winner Daniel Sullivan. Our second production marked John Patrick Shanley's 10<sup>th</sup> collaboration with MTC with the world premiere of *Outside Mullingar*, which featured Debra Messing and Brian F. O'Byrne, and garnered a Tony nomination for Best Play. Our Broadway season closed with the highly anticipated world premiere of Harvey Fierstein's *Casa Valentina*, which represented his first collaboration with MTC and earned four Tony nominations, including Best Play.

On Stage I at New York City Center, all three productions were exciting world premieres by playwrights whose works have never before been staged at MTC. Amanda Peet made her playwriting debut with *The Commons of Pensacola*, starring Sarah Jessica Parker and Blythe Danner; followed by the world premieres of David Grimm's *Tales from Red Vienna*, starring Nina Arianda and Kathleen Chalfant; and Sarah Treem's *When We Were Young and Unafraid* starring Cherry Jones and Zoe Kazan. At the Studio at Stage II, MTC fulfilled its mission to present adventurous new work with the American premieres of Dennis Kelly's provocative drama *Taking Care of Baby*, starring Margaret Colin and Reed Birney; and *The Lion*, a poignant and deeply moving one-man musical by Benjamin Scheuer. Due to the affordably priced \$30 tickets to Stage II performances, MTC was able to attract new audiences.



Brian Cross, *The Snow Geese*

Artistic development continues to be the cornerstone of MTC's mission. This year, our Artistic Development department reviewed more than 1,000 scripts and held over 50 readings, including our distinguished *Ernst C. Stiefel Reading Series*. The playwrights who participated in this year's reading series greatly benefited from important artistic modifications to the program, such as the addition of 29-hour rehearsal periods for each artistic team to revise their work. Several of the plays in this series have gone on to full productions at other theatres; this is a wonderful testament to the important work being developed at MTC. The creation of new work was also supported through MTC's various commissioning programs. Last season we provided commissions to three writers through the U.S. Trust New American Play Program, and six writers through the Sloan Initiative Setting the Stage for Science and Technology program to create works relating to science, technology and math themes. In addition, we welcomed three writers and a performance ensemble group into

the second year of our Studio at Stage II Writer's Room playwriting program, where writers are commissioned to take bold artistic risks and test the limits of their imaginations.

During our 2013-14 season, MTC was proud to introduce a groundbreaking new initiative to complement the ongoing cultural enrichment activities that comprise our Education Program. The Stargate Theatre Company pilot program hired nine court-involved young men to form a unique theatre company, which provided them with work and literacy skills. As part of the program, the company members wrote, produced, and performed a piece of theatre titled *Behind My Eyes* which was inspired by their own personal experiences. This compelling play was presented at City Center's Stage II for an audience that included program funders, participant's families, and other community supporters and proved to be a deeply moving event. The success of this program has inspired MTC to expand and enhance the Stargate model for the 2014-15 season.

Our eight productions attracted an audience of 207,639 individuals over the course of the season, including 63,096 subscriber visits, 17,955 Patron visits, and 126,588 single ticket buyers, along with young people, their families, and educators who took part in the Education Program. Due to summer presentations of *When We Were Young and Unafraid* and *The Lion*, some performances took place in fiscal year 2015 and attracted an audience of 13,998, which is reflected in the above totals.

As a not-for-profit theatre, our focus is to produce works with artistic merit regardless of their ability to generate large ticket sales. We are proud that this mission led to both artistic and financial success in the 2013-14 season. With a stellar roster of playwrights, actors and directors, MTC's subscription campaign ended with the highest income total since the 2006-07 season and an increase of 21.5% over the 2012-13 season. We also experienced financial growth from contributed income, including that from MTC's terrifically successful Spring Gala fundraiser honoring our esteemed Board member Tom Secunda, a founding partner of Bloomberg.



Benjamin Scheuer, *The Lion*

We are only able to promote new voices and new works because of the generosity of a vibrant community of dedicated individuals and institutions who believe in the important work we do. We thank our artists, audience members, patrons, subscribers, and our committed staff. We are especially grateful to our Board of Directors, led by our chairman, David Hodgson and our president Bethany Millard, for their continued generosity and leadership. We thank you for joining us in making the 2013-14 season a success and we look forward to another wonderful year.

We'll see you at the theatre!

All best,

Lynne Meadow  
Artistic Director

Barry Grove  
Executive Producer

# FROM OUR BOARD LEADERS

Dear Friends,

The 2013-14 season was one that truly embodied the spirit of MTC's mission of producing the highest quality contemporary theatre. Under the outstanding leadership of Artistic Director Lynne Meadow and Executive Producer Barry Grove, our season exemplified great artistic success for MTC, which served to remind us that our longtime mission to produce the best contemporary theatre still remains relevant. We also expanded our education initiatives to make the greatest possible impact for those most in need of arts education, and we experienced continued success at *The Studio at Stage II*, a ground-breaking playwriting lab for bold new work.



Chairman David Hodgson with  
2014 Spring Gala Honoree Thomas Secunda

MTC's 2013-14 season boasted a terrific roster of acclaimed writers, directors and actors, and also showcased the talents of first time playwrights. Amanda Peet made her playwriting debut with *The Commons of Pensacola* which opened our Off-Broadway season at New York City Center; long-time MTC collaborator John Patrick Shanley charmed audiences with the world premiere romantic comedy *Outside Mullingar*, which received Tony and Drama Desk Best Play nominations; and the incomparable Harvey Fierstein marked his return to playwriting with the witty and compelling *Casa Valentina*, which garnered 4 Tony nominations, including Best Play, Best Performance by an Actor in a Featured Role for Reed Birney, Best Performance by an Actress in a Featured Role for Mare Winningham, and Best Costume Design for Rita Ryack. Mr. Birney received the Drama Desk Award for Best Actor in a Featured Role, and Ms. Winningham received an Outer Critics Circle Award for Best Featured Actress. We are pleased to report that, due to the excitement surrounding these productions, we achieved a record-breaking subscription campaign – the highest in more than 10 years.

MTC continued its adventurous programming at *The Studio at Stage II* at New York City Center. During the 2013-14 season, *The Studio* hosted two exciting American premieres. Its first production was Tony Award winner Dennis Kelly's provocative drama *Taking Care of Baby*. Touted as "a true marvel" by Time Out New York, the show ran for five weeks at 87% of capacity. After an award-winning run at the 2013 Edinburgh Fringe Festival, *The Lion* took the stage at *The Studio* for its American debut. Benjamin Scheuer's touching musical garnered both critical and popular acclaim throughout its limited five week run and operated at 86% of capacity. In addition to being a producing venue, *The Studio* serves as a creative lab for MTC's *Studio at Stage II Writer's Room*. This

commissioning initiative has created a supportive environment through which up-and-coming writers are given the resources and the encouragement to take artistic risks and to push the boundaries of their imaginations.

During MTC's 2013-14 season we also celebrated the 20th anniversary of our student playwriting initiative *Write on the Edge* (WrOTE) that provides students throughout the boroughs of New York City with the opportunity to attend a MTC production and then to create their own plays based upon the work's themes. The now two-pronged WrOTE program—with one version intended for the traditional classroom setting and the other for specifically modified for incarcerated youth—continues to open creative doors



Kristen Bush and Margaret Colin,  
*Taking Care of Baby*

for young men and women across New York City and attracts over 500 participants on an annual basis.

As the newest component of MTC's *Education Program*, the *Stargate Theatre Company* was an intensive intervention initiative that enlisted court-involved youth in the summer 2013 to use theatre as a powerful means to constructively explore their past experiences and future potential.

Thanks to the generosity of our donors, MTC's two annual special events raised significant funds to support our on-going artistic development, education, and production initiatives. The Winter Benefit, held on February 3 at The Allen Room at Jazz at Lincoln Center's Fredrick P. Rose Hall, welcomed 227 guests to an intimate night of cocktails, a seated dinner, and a cabaret performance that featured the talents of Tony Award Winner Norbert Leo Butz (*Dirty Rotten Scoundrels*), Laura Osnes (*Cinderella*), Daniel Breaker (*Passing Strange*), and Condola Rashad (*Stick Fly*). The evening raised \$614,398. The Spring Gala; held on May 19 at Cipriani 42nd Street, honored MTC board member and Bloomberg founding partner Thomas F. Secunda for his generous support and commitment to MTC. The gala evening included a cocktail reception, a seated dinner, and performances from the casts of some of Broadway's hottest shows including, *After Midnight*, *Beautiful - The Carol King Musical*, *A Gentleman's Guide To Love And Murder*, and *Hedwig and The Angry Inch*. The gala was attended by over 600 guests and raised \$1,622,133.



President and Executive Committee Chairman Bethany Millard with Executive Producer Barry Grove

We have accomplished so much this year at MTC, from presenting premiere works by theatre's leading playwrights to nurturing the next generation of artists to creating exciting educational opportunities for students from all walks of life. These continuing achievements are made possible by the tremendous commitment and loyalty shown by our Patrons, institutional partners, subscribers and single-ticket buyers. We also express our deepest appreciation to the dedicated MTC staff, and the Board of Directors whose generosity, leadership and advocacy ensure that MTC remains a vital center of American theatre.

With best wishes,

David C. Hodgson  
Chairman

Bethany Millard  
President/Chairman, Executive Committee

# BOARD OF DIRECTORS

as of June 30, 2014

**LYNNE MEADOW**  
ARTISTIC DIRECTOR

**BETHANY MILLARD**  
PRESIDENT/ CHAIRMAN,  
EXECUTIVE COMMITTEE

**BARRY GROVE**  
EXECUTIVE PRODUCER

**W. GREGG SLAGER**  
TREASURER  
*Senior Partner,  
Ernst & Young*

**DAVID C. HODGSON**  
CHAIRMAN  
*Managing Director,  
General Atlantic LLC*

**BARBARA J. FIFE**  
SECRETARY

**SYLVIA ABLON**  
**CHRISTINE BARANSKI**  
*Actor*

**JOHN LEE BEATTY**  
*Scenic Designer*

**MATTHEW C. BLANK**  
*Chairman and CEO,  
Showtime Networks Inc.*

**ROBERT CARLOCK**  
*Television Producer and Writer*

**LORI FIFE**  
*Partner,  
Weil, Gotshal & Manges*

**MARIE T. GALLAGHER**  
*Senior Vice President and Controller,  
PepsiCo*

**JOHN D. GILLIAM**  
*Retired CIO,  
Robert Wood Johnson Foundation  
Retired Partner,  
Goldman, Sachs & Co.*

**JOSEPH H. GLEBERMAN**  
*Advisory Director,  
Goldman, Sachs & Co.*

**GAY GOLDMAN**  
*President,  
GG Productions, Inc.*

**JOSEPH HEALEY**  
*Senior Client Partner,  
Korn / Ferry International*

**MARTIN KELLY**  
*Chief Financial Officer,  
Apollo Global Management*

**JEFFREY B. KINDLER**

**FIONA KIRK**  
*Journalist*

**ANN M. LIMBERG**  
*Division Executive, Northeast  
U.S. Trust, Bank of America  
Private Wealth Management*

**ANDREW J. MARTIN-WEBER**

**ROBERTA G. OLSEN**

**BERNADETTE PETERS**  
*Actor*

**HOWARD J. RUBENSTEIN**  
*President  
Rubenstein Associates, Inc.*

**THOMAS F. SECUNDA**  
*Founding Partner  
Bloomberg L.P.*

**ROBERT H. SINCLAIR, ED.D.**  
*Retired High School Principal,  
NYC Department of Education*

**JEFFREY A. SINE**  
*Partner,  
The Raine Group, LLC*

**NIGEL SMITH**  
*Partner,  
PwC*

**PETER J. SOLOMON**  
*Founder,  
Peter J. Solomon Company*

**MICHAEL A. STEINBERG**  
*CEO,  
Steinberg Asset Management LLC*

**SHARON SULLIVAN**

**JUDY TATE**  
*Teaching Artist/Writer*

**LISA TOWBIN**

**JACK YANG**  
*Managing Director  
Alcentra Group*

**PETER J. SOLOMON**  
CHAIRMAN EMERITUS

**MICHAEL COLES**  
CHAIRMAN EMERITUS

**PAUL B. KOPPERL**  
CHAIRMAN EMERITUS

**EDWIN C. COHEN**  
CHAIRMAN EMERITUS

**A.E. JEFFCOAT (1924-2002)**  
FOUNDING CHAIRMAN

# THE 2013-14 SEASON



Pictured (clockwise from top left): **Evan Jonigkeit and Brian Cross** in **THE SNOW GEESE** (WORLD PREMIERE; October 1 - December 14, 2013); **Brian F. O'Byrne and Debra Messing** in **OUTSIDE MULLINGAR** (WORLD PREMIERE; January 3 - March 16, 2014); **Nick Westrate, John Cullum, Gabriel Ebert, Tom McGowan** in **CASA VALENTINA** (WORLD PREMIERE; April 1 - June 29, 2014); **Tina Benko and Michael Esper** in **TALES FROM RED VIENNA** (WORLD PREMIERE; February 26 - April 27, 2014); **Benjamin Scheuer** in **THE LION** (AMERICAN PREMIERE; June 10 - July 13, 2014); **MICHAEL CRANE** in **TAKING CARE OF BABY** (AMERICAN PREMIERE; November 5 - December 8, 2013); **Zoe Kazan and Cherry Jones** in **WHEN WE WERE YOUNG AND UNAFRAID** (WORLD PREMIERE; May 21 - August 10, 2014); **Michael Stahl-David and Sarah Jessica Parker** in **THE COMMONS OF PENSACOLA** (WORLD PREMIERE; October 22, 2013 - February 9, 2014)

Victoria Clarke  
and Danny Burstein





**AT THE SAMUEL J. FRIEDMAN THEATRE**

THE  
**SNOW GEESE**

BY  
**SHARR WHITE**

WITH  
**MARY-LOUISE PARKER**

**DANNY BURSTEIN    VICTORIA CLARK**  
**EVAN JONIGKEIT    BRIAN CROSS    CHRISTOPHER INNVAR    JESSICA LOVE**

SCENIC DESIGN  
**JOHN LEE BEATTY**

COSTUME DESIGN  
**JANE GREENWOOD**

LIGHTING DESIGN  
**JAPHY WEIDEMAN**

ORIGINAL MUSIC & SOUND DESIGN  
**DAN MOSES SCHREIER**

PROJECTION DESIGN  
**ROCCO DISANTI**

HAIR & WIG DESIGN  
**TOM WATSON**

FIGHT DIRECTOR  
**RICK SORDELET**

DANCES  
**MIMI LIEBER**

CASTING  
**CAPARELLIOTIS CASTING & TELSEY + COMPANY**

PRODUCTION STAGE MANAGER  
**JAMES FITZSIMMONS**

DIRECTED BY  
**DANIEL SULLIVAN**

With war raging abroad, newly widowed Elizabeth Gaesling gathers her family for their annual shooting party to mark the opening of hunting season in rural, upstate New York. But Elizabeth is forced to confront a new reality as her carefree eldest son comes to terms with his impending deployment overseas and her younger son discovers that the father they all revered left them deeply in debt. Together, the family must let go of the life they've always known. **THE SNOW GEESE** is a co-production with MCC Theater. Special thanks to The Harold and Mimi Steinberg Charitable Trust for supporting Manhattan Theatre Club.

---

**NOMINATIONS AND AWARDS**

**Edgerton Foundation  
New American Plays Award**

**“GORGEOUS and VISCERALLY CHARGED. A PRODUCTION with ELEGANCE TO SPARE. MARY-LOUISE PARKER is RAVISHING.” -The Hollywood Reporter**

**“RICH, DEEP and DARKLY LUSCIOUS. DANNY BURSTEIN is TOUCHING and VICTORIA CLARK is EXQUISITE. SHARR WHITE writes SO KNOWINGLY ABOUT COMPLICATED WOMEN.” -Newsday**


**AT THE SAMUEL J. FRIEDMAN THEATRE**

# Outside Mullingar

BY  
John Patrick Shanley

WITH  
Brían F. O’Byrne      Debra Messing  
John Aylward      Dearbhla Molloy

SCENIC DESIGN  
John Lee Beatty

COSTUME DESIGN  
Catherine Zuber

LIGHTING DESIGN  
Mark McCullough

ORIGINAL MUSIC &  
SOUND DESIGN  
Fitz Patton

HAIR & WIG DESIGN  
Tom Watson

DIALECT COACH  
Stephen Gabis

PRODUCTION STAGE MANAGER  
Winnie Y. Lok

CASTING  
Nancy Piccione

DIRECTED BY  
Doug Hughes

Tony winner Brían F. O’Byrne (*Frozen*, *Doubt*, *Million Dollar Baby*) and Emmy® winner Debra Messing (“Will & Grace,” “Smash,” *Collected Stories*) play Anthony and Rosemary, two introverted misfits straddling 40. Anthony has spent his entire life on a cattle farm in rural Ireland, a state of affairs that—due to his painful shyness—suits him well. Rosemary lives right next door, determined to have him, watching the years slip away. With Anthony’s father threatening to disinherit him and a land feud simmering between their families, Rosemary has every reason to fear romantic catastrophe. But then, in this very Irish story with a surprising depth of poetic passion, these yearning, eccentric souls fight their way towards solid ground and some kind of happiness. Their journey is heartbreaking, funny as hell, and ultimately deeply moving. *OUTSIDE MULLINGAR* was commissioned by MTC through the U.S. Trust New American Play Commissioning Program.

---



---

## NOMINATIONS AND AWARDS

**Tony Nomination**  
**Best Play**

**Edgerton Foundation**  
**New American Plays Award**

“JOHN PATRICK SHANLEY’S FINEST WORK SINCE DOUBT.” -The New York Times

“DEBRA MESSING & BRIÁN F. O’BYRNE are a match made in heaven.” -Variety

“★★★★!” -Time Out NY



Brian F. O'Byrne and Debra Messing



Nick Westrate, Patrick Page and Tom McGowan



# AT THE SAMUEL J. FRIEDMAN THEATRE

## CASA VALENTINA

BY  
Harvey Fierstein

WITH  
Reed Birney  
Lisa Emery  
Larry Pine

John Cullum  
Tom McGowan  
Nick Westrate

Gabriel Ebert  
Patrick Page  
Mare Winningham

SCENIC DESIGN  
Scott Pask

COSTUME DESIGN  
Rita Ryack

LIGHTING DESIGN  
Justin Townsend

ORIGINAL MUSIC & SOUND DESIGN  
Fitz Patton

HAIR, WIG & MAKEUP DESIGN  
Jason P. Hayes

CASTING  
Caparelliotis Casting  
& Nancy Piccione

FIGHT DIRECTION  
Thomas Schall

PRODUCTION STAGE MANAGER  
William Joseph Barnes

ADDITIONAL CASTING  
Telsey + Company

DIRECTED BY  
Joe Mantello

Back in 1962, most men went to the Catskill Mountains to escape the summer heat, but others took the two-hour drive to escape something else entirely: being men. Nestled in the land of dirty dancing and borscht belt comedy sat an inconspicuous bungalow colony that catered to a very special clientele: heterosexual men whose favorite pastime was dressing and acting as women. It was paradise for these men—white-collar professionals with families—to spend their weekends discreetly and safely inhabiting their chosen female alter egos. But when they got the opportunity to share their secret lives with the world, these “self-made women” had to decide whether the freedom they would gain by emerging from hiding was worth the risk of personal ruin. CASA VALENTINA is produced by special arrangement with Colin Callender, Robert Cole, Frederick Zollo and The Shubert Organization. Lead support for CASA VALENTINA was provided by MTC’s Producing Fund Partner, Andrew Martin-Weber.

---

### NOMINATIONS AND AWARDS

#### Tony Nominations

**Best Play, Best Featured Actor (Reed Birney)  
Best Featured Actress (Mare Winningham)  
Best Costume Design**

#### **Edgerton Foundation**

**New American Plays Award**

“FUNNY & PROVOCATIVE. GENUINELY ARRESTING.” -The New York Times

“A fascinating and timeless new play by HARVEY FIERSTEIN!” -New York Magazine

“FAR AND AWAY THE BEST NEW PLAY OF THE SEASON!” -Theatermania



# AT NEW YORK CITY CENTER STAGE I

## THE COMMONS OF PENSACOLA

BY  
AMANDA PEET

WITH  
BLYTHE DANNER ZOE LEVIN ALI MARSH  
SARAH JESSICA PARKER MICHAEL STAHL-DAVID NILAJA SUN

SCENIC DESIGN  
SANTO LOQUASTO

COSTUME DESIGN  
TOM BROECKER

LIGHTING DESIGN  
JASON LYONS

SOUND DESIGN  
JILL BC DU BOFF

FIGHT DIRECTOR  
THOMAS SCHALL

PRODUCTION STAGE MANAGER  
DIANE DIVITA

CASTING  
CAPARELLIOTIS CASTING  
& KELLY GILLESPIE

DIRECTED BY  
LYNNE MEADOW

Judith (Blythe Danner) has been divested of her assets and forced to leave her luxurious New York life after her husband's Wall Street scam became headline news. When her daughter Becca (Sarah Jessica Parker) and Becca's filmmaker boyfriend pay Judith a visit to the one bedroom condo Judith now occupies in Pensacola, Florida, everyone's motives are called into question. How will past and present circumstances inform how this family moves into the future? Lead support for THE COMMONS OF PENSACOLA is provided by MTC's Producing Fund Partner, Andrew Martin-Weber. Special thanks to The Harold and Mimi Steinberg Charitable Trust for supporting Manhattan Theatre Club. Additional support for THE COMMONS OF PENSACOLA is provided by The Blanche and Irving Laurie Foundation.

"A RICH & ABSORBING DRAMA, LACED WITH BITING HUMOR. SENSITIVELY DIRECTED by LYNNE MEADOW, AMANDA PEET'S THE COMMONS OF PENSACOLA provides a welcome opportunity to watch two theatre veterans of different generations share the stage. BLYTHE DANNER & SARAH JESSICA PARKER are EXCELLENT!" -The New York Times

"★★★★ PENETRATING & CAPTIVATING." -The Independent



Nina Arianda and Michael Esper





AT NEW YORK CITY CENTER STAGE I

# TALES FROM RED VIENNA

BY  
DAVID GRIMM

NINA ARIANDA  
MICHAEL ESPER

WITH  
TINA BENKO  
MICHAEL GOLDSMITH

KATHLEEN CHALFANT  
LUCAS HALL

SCENIC DESIGN  
JOHN LEE BEATTY

COSTUME DESIGN  
ANITA YAVICH

LIGHTING DESIGN  
PETER KACZOROWSKI

SOUND DESIGN  
ROB MILBURN &  
MICHAEL BODEEN

HAIR & WIG DESIGN  
TOM WATSON

FIGHT DIRECTION  
THOMAS SCHALL

PRODUCTION STAGE MANAGER  
BRYCE McDONALD

CASTING  
NANCY PICCIONE &  
KELLY GILLESPIE

DIRECTED BY  
KATE WHORISKEY

Tony Award winner Nina Arianda (*Venus in Fur*, *Midnight in Paris*) returns to MTC as Heléna, a woman who has lost her husband in World War I, and with him, her financial security. Struggling to maintain her way of life, she reluctantly turns to the oldest profession. Heléna manages to separate her secret life from her public persona – that is until she crosses paths with a man who has the power to expose and ruin her. David Grimm’s witty and beautifully poetic new work also features Drama Desk Award winner and Tony nominee Kathleen Chalfant (*Wit*, *Angels in America*). Set as an enormous political tide is turning throughout Europe, TALES FROM RED VIENNA explores the effects of war on women, the circumstances that control their lives and the dreams that set them free.

---

## NOMINATIONS AND AWARDS

**Edgerton Foundation  
New American Plays Award**

“REMARKABLE.” -Entertainment Weekly

“The wondrous NINA ARIANDA leads an accomplished cast in this compelling new drama.” -Time Out New York



# AT NEW YORK CITY CENTER STAGE I

## WHEN WE WERE YOUNG AND UNAFRAID

BY  
SARAH TREEM

CHERISE BOOTHE

WITH  
PATCH DARRAGH

CHERRY JONES

ZOE KAZAN

MORGAN SAYLOR

SCENIC DESIGN  
SCOTT PASK

COSTUME DESIGN  
JESSICA PABST

LIGHTING DESIGN  
RUSSELL H. CHAMPA

ORIGINAL MUSIC & SOUND DESIGN  
BROKEN CHORD

HAIR & WIG DESIGN  
LEAH LOUKAS

FIGHT DIRECTION  
THOMAS SCHALL

PRODUCTION STAGE MANAGER  
ROY HARRIS

CASTING  
NANCY PICCIONE &  
KELLY GILLESPIE

DIRECTED BY  
PAM MacKINNON

Two-time Tony® Winner Cherry Jones (*Doubt*, “24”) returns to MTC for Sarah Treem’s (“House of Cards,” “In Treatment”) powerful new play that takes us inside an underground women’s shelter in the early 1970s... before Roe v. Wade, before the Violence Against Women Act, before women had places to turn in times of distress. Agnes (Cherry Jones) has turned her quiet bed and breakfast into one of the few spots where a woman on the run can seek refuge. But to Agnes’ dismay, her latest young runaway Mary Anne is having a profound influence on her teenage daughter Penny, forcing each girl to question her destiny. And as the drums of the feminist revolution grow louder, Agnes is forced to confront her own presumptions about the people she’s been trying to help. Deeply moving and beautifully rendered, WHEN WE WERE YOUNG AND UNAFRAID explores the passion of youth, the wisdom of age, and the people who awaken us to new possibilities.

“YOU CAN’T FIND A BETTER STAGE ACTRESS THAN CHERRY JONES.” – *The Record*

“CHERRY JONES IS PERFECT.” – *Variety*





Margaret Colin and Kristen Bush

# THE STUDIO AT STAGE II

## HAROLD AND MIMI STEINBERG NEW PLAY SERIES

# TAKING CARE OF BABY

BY  
DENNIS KELLY

WITH  
FRANCOIS BATTISTE    REED BIRNEY    KRISTEN BUSH  
AMELIA CAMPBELL    MARGARET COLIN    MICHAEL CRANE  
ETHAN PHILLIPS    ZACH SHAFFER

SCENIC DESIGN  
LAURA JELLINEK

COSTUME DESIGN  
JESSICA PABST

LIGHTING DESIGN  
DAVID WEINER

SOUND DESIGN  
FITZ PATTON

PRODUCTION STAGE MANAGER  
JILLIAN M. OLIVER

CASTING  
NANCY PICCIONE &  
KELLY GILLESPIE

DIRECTED BY  
ERICA SCHMIDT

An unspeakable tragedy. A shattered family. An accusation of murder. TAKING CARE OF BABY is a provocative new drama that boldly explores the elusive nature of truth and the depths we'll go to expose it. Francois Battiste (*Magic/Bird*), Reed Birney (*Blasted*, *Our Leading Lady*), Kristen Bush (*Kin*, *The Common Pursuit*), Amelia Campbell (*A Streetcar Named Desire*, *Our Country's Good*), Margaret Colin (*The Columnist*, "Gossip Girl"), Michael Crane (*Bloody Bloody Andrew Jackson* Off-Broadway), Ethan Phillips (*Golden Age*) and Zach Shaffer ("Smash") star in this American premiere by Tony Award® winner Dennis Kelly, directed by Erica Schmidt (*Humor Abuse*, *Invasion!*).

"A TRUE MARVEL!" – Time Out New York

"INCREDIBLY BOLD. A NEW KIND OF THEATRE." – Entertainment Weekly

"EXCELLENT and ENGROSSING!" – The New York Observer

# THE STUDIO AT STAGE II

## HAROLD AND MIMI STEINBERG NEW PLAY SERIES

### THE LION

WRITTEN AND PERFORMED BY  
**BENJAMIN SCHEUER**

SCENIC DESIGN  
**NEIL PATEL**

COSTUME CONSULTANT  
**JENNIFER CAPRIO**

LIGHTING DESIGN  
**BEN STANTON**

SOUND DESIGN  
**LEON ROTHENBERG**

PRODUCTION STAGE MANAGER  
**DAN DA SILVA**

DIRECTED BY  
**SEAN DANIELS**

A true story of love, loss, family loyalty, and the redemptive power of music. Following an award-winning run at the 2013 Edinburgh Fringe Festival, writer/performer Benjamin Scheuer (winner of the ASCAP Cole Porter Award for songwriting) shares his gripping coming-of-age tale. Directed by Sean Daniels, whose work has been seen at The Kennedy Center and Actor's Theatre of Louisville, THE LION is a candid, poignant, and charming new solo musical from a next-generation troubadour.

“ONLY THE HARDEST-HEARTED COULD RESIST!” - The New York Times

“★★★★ AN IRRESISTIBLE WINNER!” - The Daily News

“THE BEST MUSICAL I’VE SEEN SO FAR THIS YEAR!” - The Huffington Post



Benjamin Scheuer

# THE STUDIO AT STAGE II HAROLD AND MIMI STEINBERG NEW PLAY SERIES

THE  
STUDIO  
AT  
STAGE II

## HAROLD AND MIMI STEINBERG NEW PLAY SERIES

With the leadership support from The Harold and Mimi Steinberg Charitable Trust, MTC devised **The Studio at Stage II - Harold and Mimi Steinberg New Play Series** to encourage artist risktaking and present bold new works for bold new audiences. Since its inception, the Harold and Mimi Steinberg New Play Series has featured the works of Julianna Nash and Julia Jordan (*Murder Ballad*); Tarell Alvin McCraney (*Choir Boy*); Tony Award-winner Dennis Kelly (*Taking Care of Baby*) and Benjamin Scheuer (*The Lion*). Each of these productions has garnered critical and popular success, playing to over 85% capacity throughout their respective runs.

To encourage the greater inclusion of younger and more diverse audience members, MTC has implemented a ticket subsidy program for The Studio at Stage II presentations. The program guarantees that all tickets for the initial five-week run are offered at the affordable price of \$30.





THE FRANCO-PRUSSIAN WAR by Joshua Harmon,  
directed by Stephen Brackett at the Ernst C. Stiefel Reading Series  
on Stage I at New York City Center.

# ARTISTIC DEVELOPMENT



WHEN WE WERE YOUNG AND  
UNAFRAID playwright Sarah Treem and  
MTC Executive Producer Barry Grove



MTC Artistic Director Lynne Meadow  
and OUTSIDE MULLINGAR  
playwright John Patrick Shanley

# ARTISTIC DEVELOPMENT

MTC's Artistic Development program is dedicated to serving the artists of today and tomorrow by: (1) supporting promising writers and scripts throughout the development process; (2) encouraging new playwrights to continue to create works for the stage; and (3) promoting new theatrical work from celebrated playwrights throughout their careers.

---

## 2013-14 Artistic Development Highlights

### *Readings*

During the 2013-14 season, MTC held more than 40 readings at our Creative Center, located in the heart of the theatre district at 311 West 43rd Street. A program championed by MTC Artistic Director Lynne Meadow, readings give both emerging and seasoned artists the opportunity to present new work and receive constructive feedback. All plays that receive a reading are supported by MTC artistic and administrative staff in hopes of helping the piece realize a full production. Works that have evolved out of this process include John Patrick Shanley's *Outside Mullingar*, Tarell Alvin McCraney's *Choir Boy*, and Molly Smith Metzler's *Close Up Space*.

### *The Ernst C. Stiefel Reading Series*

Formerly known as 7@7, The Ernst C. Stiefel Reading Series presents new works on consecutive Mondays during the spring. Presented to industry leaders and MTC Patrons and Subscribers, the series consistently plays to audiences at full capacity. The Stiefel Reading Series is distinct in that each selected work is afforded 29 hours of rehearsal with a professional director before a final reading takes place. In the 2013-14 season, approximately 1,100 audience members were welcomed by MTC to New York City Center Stage I for this important series.

#### THE 2013-14 ERNST C. STIEFEL READING SERIES

March 24—I'M GONNA PRAY FOR YOU SO HARD  
Written by Halley Feiffer | Directed by Trip Cullman

March 31—THE FRANCO-PRUSSIAN WAR  
Written by Joshua Harmon | Directed by Stephen Brackett

April 7—THE CHINESE ROOM  
Written by Michael West | Directed by James MacDonald

April 7—HAPPY PLACE  
Written by Joe Tracz | Directed by Carolyn Cantor

# ARTISTIC DEVELOPMENT

## *Commissions*

MTC manages several commissioning programs in an effort to serve as a home for new works and artists throughout their careers. In addition to providing financial backing to playwrights, commissions offer writers extensive support from our experienced artistic staff and developmental readings at MTC's Creative Center. Each commissioned script is evaluated for consideration in upcoming MTC seasons. Among last season's commissioned artists are Samuel D. Hunter (2014 MacArthur Fellow), Donald Margulies (2014 PEN Literary Award Winner) and Madeleine George (2014 Pulitzer Prize Finalist).

### *U.S. Trust New American Play Program*

Through the generous support of U.S. Trust, MTC has commissioned new works from John Patrick Shanley, David Lindsay-Abaire, and Donald Margulies, among others. In the 2013-14 season, MTC commissioned **Neil LaBute** (*reasons to be pretty*), **Matthew Lopez** (*The Whipping Man*), **Richard Greenberg** (*The Assembled Parties*), **Nick Payne** (*Constellations*), **Melissa Ross** (*Thinner Than Water*), and **Richard Nelson, Richard Pevears and Larissa Volokhonsky** (*Chess*; translations of *Anna Karenina* and *The Brothers Karamazov*).

### *The Sloan Initiative: Setting the Stage for Technology*

Through generous support from the Alfred P. Sloan Foundation, MTC provides readings, workshops and commissions as part of The Sloan Initiative: Setting the Stage for Technology. This program supports playwrights that are developing work that specifically addresses themes of science, mathematics or technology. The Foundation also provides production support for works dealing with these themes. Playwrights commissioned through this program in the 2013-14 season were **Madeleine George, Branden Jacobs-Jenkins, Tom Holloway, Greg Pierce, Nell Benjamin, Jeff Augustin,** and **Alexandra Wood.**

### *The Writer's Room*

In 2012, MTC partnered with Ars Nova to launch The Writer's Room, a program to commission and support playwrights in the process of creating bold new work for the stage. The Writer's Room encourages artistic risk-taking in a supportive environment.

The inaugural commissions of The Writer's Room were awarded in spring 2013 to **Adam Bock and Justin Levine** (collaborating on a new musical), **Thomas Bradshaw, Samuel D. Hunter,** and **Sharyn Rothstein.** These participants continued onto their second year of the program this season and produced full scripts. The 2013-14 class includes **Rachel Bonds, Frances Ya-Chu Cowhig, Jackie Sibblies Drury,** and **PigPen Theatre Co.**

---

#### **MTC's 2013-14 Artistic Development Program was funded in part by:**

Alfred P. Sloan Foundation • The Edgerton Foundation • The Ernst C. Stiefel Foundation  
U.S. Trust • The Kaplen Brothers Fund • The Fan Fox & Leslie R. Samuels Foundation  
The Blanche and Irving Laurie Foundation • Rodgers and Hammerstein Foundation



Brooklyn Tech students attend the CASA VALENTINA education matinee



Artistic Director Lynne Meadow with the spring 2014 intern class

# EDUCATION PROGRAM



Spring 2014 Write Now! participants



Family matinee attendees participate in a pre-show workshop

# EDUCATION PROGRAM

Since 1989, MTC's Education Program has touched the lives of more than 100,000 classroom students, educators, families, MTC Patrons and Subscribers; and it has fostered new and existing partnerships with a multitude of educational institutions. Our eight programs have enabled participants not only to study and attend world-class productions on MTC's stages, but also engage actively with the work by writing their own short plays based upon our season's themes. Through this creative process, our participants explore complex subjects and provocative dramatic images, deepening their understanding of themselves and the world around them. Additionally, MTC offers an array of professional development workshops for educators and teaching artists and provides hands-on theatre management experience and mentorship to early-career professionals.

---

## *School-Age Initiatives*

**The Core Program**, MTC's largest education initiative, integrates preparatory theatre-based classroom workshops with attendance at one of our productions. In the 2013-14 season, the Core Program served 1,729 students in 23 schools, exposing these students not only to the excitement of live theatre but also to a new kind of learning. For many of these students, it was their first time attending a professional production. The combination of precursory classroom study and theatregoing yielded compelling results. In the words of one Core student who attended a CASA VALENTINA education matinee, the experience "not only helped me further understand the plot, but also helped me discover things about myself and who I really, honestly am."



Students at Brooklyn Tech take part in a CASA VALENTINA CORE Unit workshop.

**Write on the Edge (WrOTE)** is a playwriting residency program which serves at-risk students and incarcerated youth in the New York City area. In addition to pre-performance classroom workshops and attendance at an education matinee, students engage with the work's text by writing their own original play inspired by the MTC production. This year students at 18 schools participated in the program under the guidance of professional directors, playwrights and actors.

In the past year, **Write Now!** has enabled 16 high school students to fuel their creativity in a weekly afterschool playwriting workshop. Participants have the opportunity to hone their playwriting and dramaturgical skills by generating original works with the assistance of an experienced teaching artist and playwright. The program culminated with professional actors performing staged readings of the students' works for an audience of classmates, families, friends and MTC staff.

**TheatreLink**, launched in 1998, was one of the first theatre education programs to utilize digital conferencing technologies to connect geographically separated students. This season the program connected 360 students in 17 schools across the United States, the United Kingdom, Greece and South Africa. Students developed original scripts based on the themes in Richard Greenberg's *The Assembled Parties*, then sent their play to students at partner schools who produced it, video recording their performance for the author school or performing live via videoconference.

# EDUCATION PROGRAM

## *Audience Development Initiatives*

The **Family Matinee Series** provides teenagers and their adult guests with a day of intergenerational dialogue, learning and theatergoing. During the 2013-14 season, participants were able to study and attend *The Snow Geese*, *Outside Mullingar* and *Casa Valentina*. The series, held on Saturdays and provided at no charge, includes a continental breakfast and preparatory workshop focusing on key themes in the featured production. A total of 323 individuals – students and their adult guests – participated.

Led by Director of Education David Shookhoff, **Patron/Subscriber Workshops** allow MTC audience members an opportunity to forge a deeper understanding of MTC productions through hands-on, theatre-based activities and robust conversations. In the 2013-2014 season, 93 subscribers and Patrons participated in the nine workshops and discussion sessions focused on our Friedman productions.

---

## *Professional Development Initiatives*

**Professional Development Workshops** deepen teachers' and teaching artists' understanding of MTC's pedagogical approach and exhibit effective strategies for bringing theatre and dramatic literature to life in classrooms. Led by MTC's Education staff, these workshops use a variety of writing activities and improvisational exercises to highlight key aspects of the play under study and to suggest ways to adapt these activities to different learning styles and grade levels. Last year, more than 100 teachers and teaching artists participated in the six workshops we provided; many participated in more than one session.

The **Paul A. Kaplan Theatre Management Program** is an intensive, hands-on internship program for young theatre professionals. In the 2013-14 season, 31 interns worked in specific administrative or artistic departments, providing integral support to MTC staff members while receiving feedback and mentorship. The program seeks to immerse interns in all facets of a professional theatre company, exposing them to all aspects of the organization via weekly seminars led by department directors, invitations to MTC productions and access to special events.

---

## *Pilot Program: The Stargate Theatre Company*

In the 2013-14 season, MTC continued in the second year of a pilot project: the Stargate Theatre Company, aims to support court-involved youth as they reintegrate into their communities. Summer 2014 saw nine court-involved male teenagers complete a six-week theatremaking, literacy and workforce readiness experience. As paid members of the Stargate company, these participants wrote, produced and performed an original piece of theatre for an audience of family, friends, case workers, teachers and mentors. The performance — held at City Center, Stage II — proved to be a deeply moving event highlighting the transformative power of theatre.



The Stargate Theatre Company  
members and staff

# MORE TO COME

## A Campaign to Expand Our Commitment to Artists and Audiences

To support this work, we are in the third year of a \$5.5 million, four year campaign to fund

- The launch of **The Studio at Stage II – Harold and Mimi Steinberg New Play Series**
- Dramatically **reduced ticket prices** at The Studio at Stage II
- The creation of **The Writer's Room**, a commissioning and development program
- Greater resources for Broadway productions at the Samuel J. Friedman Theatre

MTC SALUTES THE GENEROUS DONORS WHO HAVE MADE LEADERSHIP GIFTS TO THE MORE TO COME CAMPAIGN.\*

**David and Laurie Hodgson    The Secunda Family**  
**Harold and Mimi Steinberg Charitable Trust**  
**Joe and Carson Gleberman    Jeffrey A. Sine**

Glenn and Barbara Britt    John D. and Deane A. Gilliam    The Starr Foundation  
 Sharon Sullivan and Jeffrey B. Kindler    Barbara J. Fife    Roberta G. Olsen  
 Grant and Jacqui Smith    The Blanche and Irving Laurie Foundation  
 W. Gregg and Sue Slager    In memory of Arthur Warner    National Endowment for the Arts  
 PwC    Matthew C. Blank    Adrienne and Jerry Cohen    Joseph T. Healey  
 Lynn and Elizabeth Mangum    Andrew Martin-Weber    Edith and Michael Weinberg

Jeanne Donovan Fisher    Bicky and George Kellner    Glenorchy P. Campbell    Ned J. Lustbader  
 The Skirball Foundation    Alex and Fiona Kirk    Sol and Margaret Berger Foundation  
 Russel T. Hamilton    Bethany and Robert Millard    Charles and Shelby Werner  
 Gina and David Boonshoft    Majorie Doniger    Gay and Carl Goldman    Grace E. Richardson  
 Charles S. and Jacqueline M. Warren    Nancy Bader and Michael Leventhal    Genie and Bob Birch  
 Dr. Gerald J. and Dorothy R. Friedman Foundation    The Elroy and Terry Krumholz Foundation  
 John and Joan Polcari    Merrill Rose    Janet Stahl and David Herz    Robert and Jennifer Carlock  
 New York City Department of Cultural Affairs    Lisa and Robert Towbin    Rodger Hess

\*as of June 30, 2014



# PATRON COUNCILS

## *Board Emeritus Council*

Judy Hart Angelo	Rena M. DeSisto	Matthew M. McKenna	Marcy Syms
Al Berger	James T. Flynn	Adriana Mnuchin	Kathleen E. Synnott
Arlene Blau	Bicky Kellner	Bruno A. Quinson	Charles P. Werner
Jerry Cohen	Paul Kopperl	Edward R. Roberts	Stephen R. Wilson
Michael Coles	James Marcus	Nancy C. Roberts	
Scott Delman	Cornelius Marx	Bonnie Sacerdote	

## *Patron Leadership Council*

Gay B. Goldman	Al Berger	Michael Leventhal	Merrill Rose
<i>Co-Chairman</i>	Rosa Gellert	Elizabeth Litt	Jacqui Smith
Charles P. Werner	Stanley Gotlin	J. Robert Mann, Jr.	Barry C. Waldorf
<i>Co-Chairman</i>	Reg Kingsberg	Cornelius Marx	Edith Weinberg
Carol Auerbach	Helen Kornblau	Grace E. Richardson	Michael Weinberg
Nancy R. Bader	Laura Langford	Nancy C. Roberts	Judge Richard Weinberg

## *Young Patrons*

Jennifer Rose Adams ♦ Elle Alexander ♦ Jennifer Adams and Charles Allen ♦ Chelsea Allen  
 Edward A. Allen and Amanda Miller Allen ♦ William Arndt ♦ Susan Arnes and William Arndt ♦ Maria Louisa Bianco  
 Gregory Bienstock ♦ Kristie Blase ♦ BWs ♦ Linda Brekken ♦ Jackie Brook ♦ Cory Clines ♦ Dael Cohen  
 Michael James Contini ♦ W.D. "Tres" Cossaboom III ♦ Kory Crabtree ♦ James Danner ♦ Ashley DeSimone  
 Elizabeth Mangum DeStafano ♦ Jacob Diamond ♦ Aubrie Fennecken ♦ Max Ferreira ♦ Michele Flahive  
 Emily Fleisher and Brian Hamman ♦ Ebony S. Gates ♦ Justin Giegerich ♦ Leslie Gold ♦ Ariel Granoff  
 Meghan Graper and Keith Banhazl ♦ Fiona Greely ♦ Hanna McGovern Gross ♦ Laura Grosshans and Jordyn Buchanan  
 Bhavna Grover ♦ Hamada and Payal Coley ♦ Cherra T. Hampton-Mitchell ♦ Mychal D. Harrison ♦ Megan Haseltine  
 Todd E. Heaton, MD ♦ David Herszenson ♦ Caroline Herz ♦ Michael J. Hilkin ♦ Scott Hinman  
 Kristina Hoge and Jake Bronstein ♦ David Jaffe ♦ W. Chapin Kelly ♦ Jake and Nicole Kirsch ♦ Daniel Kobayashi  
 David A. Koch ♦ Kara Kohn-Gardner ♦ Hildy Kuryk and Jarrod Bernstein ♦ Erica and Michelle Lazarow ♦ Dave Lazarus  
 Samantha Lazarus ♦ Sarah Marcus ♦ Caitlin McConnell ♦ Kyle McGrath ♦ Matt McKenna ♦ Melinda McLellan  
 Matthew J. Moses ♦ Victoria Myers ♦ Lexi Neibart ♦ Julie Nemirovsky ♦ Lisa Nusbaum ♦ Stephanie O'Connell  
 Robert and Lisa O'Connor ♦ Emem Offong ♦ Colleen M. O'Shea ♦ Kathryn Overby ♦ Erica Paley ♦ Marina Perry  
 Charles ReedChris Reichheld ♦ Laura Reilly ♦ Jed and Hallie Rosenthal ♦ Nate Rubin ♦ Ben and Carrie Sanders  
 Valentina SavelyevaSara Selbert Savov ♦ Ethan Schmertzler ♦ Jamesin Seidel ♦ Raghav Sharma and Neha Ghai  
 Marc B. Schaubert ♦ Adam Skalman ♦ Karen Slovin ♦ Rachel Soares ♦ Hannah Spencer ♦ Meredith Stoll  
 Scott Stolzenberg ♦ Kate Stoughton ♦ Rohit and Trusha Tote ♦ Colleen Trompeter ♦ Laura Vogel ♦ Lily Wilkinson  
 Beau Willimon ♦ Amy Wolf ♦ Young Fan ♦ Elizabeth Yeatman ♦ Sara Beth Zivitz

## *Young Patrons Artists Committee*

Chris Abbott ♦ Roberto Aquirre-Sacasa ♦ Nina Arianda ♦ Kyle Beltran ♦ Laura Benanti ♦ Quincy Tyler Bernstine  
 Adam Bock ♦ Carolyn Cantor ♦ Michael Chernus ♦ John Ellison Conlee ♦ Nilo Cruz ♦ Trip Cullman ♦ Maria Dizzia  
 Jill DuBoff ♦ Carson Elrod ♦ David Furr ♦ Mary Catherine Garrison ♦ Ana Gasteyer ♦ Melissa James Gibson ♦ Sam Gold  
 Daniel Goldfarb ♦ Renée Elise Goldsberry ♦ Andre Holland ♦ Sam Hunter ♦ Brian d'Arcy James ♦ Rebecca Naomi Jones  
 Julia Jordan ♦ Zoe Kazan ♦ Greg Keller ♦ Justin Levine ♦ Caissie Levy ♦ Matthew Lopez ♦ Tarell Alvin McCraney  
 Molly Smith Metzler ♦ Cristin Milioti ♦ Itamar Moses ♦ Jessica Pabst ♦ Sarah Paulson ♦ Alison Pill ♦ Lorenzo Pisoni  
 Lily Rabe ♦ Sharyn Rothstein ♦ Heidi Schreck ♦ Leigh Silverman ♦ Sharr White ♦ Beau Willimon

# WINTER BENEFIT

Manhattan Theatre Club's Winter Benefit, an exclusive one-night cabaret, was held on February 3, 2014 at The Allen Room at Jazz at Lincoln Center. The event was co-chaired by MTC Board President **Bethany Millard**, MTC Board member **Lisa Towbin**, and MTC Patron **Marla Behrman**. The evening showcased the talents of Broadway's Norbert Leo Butz, Laura Osnes, Condola Rashad, and Daniel Breaker.

The 2014 Winter Benefit raised \$614,398 and all proceeds support MTC's mission. MTC is deeply grateful to the co-chairs, donors, and artists who made the event such a smashing success.



## Sponsor Tables

Bloomberg L.P.  
David and Laurie Hodgson  
Fiona and Alex Kirk  
Bethany and Robert Millard  
Roberta G. Olsen  
The Secunda Family  
SMBC  
Susan and Peter J. Solomon  
Lisa and Robert Towbin

## Angel Tables

Lori and Mark Fife  
Showtime Networks, Inc.  
Andrew Martin-Weber

## Benefactor Tables

Joseph and Carson Gleberman  
Barbara and Eric Hippeau  
PepsiCo.  
PwC  
Gregg and Sue Slager  
Time Warner Cable  
Jack and Joyce Yang

## Sponsor Tickets

Gina and David Boonshoft  
Alex and Jill Dimitrief

Daniel M. Healey  
Jeff and Samira Sine

## Benefactor Tickets

Robert and Jennifer Carlock  
Theatrical Stage Employees Union,  
Local One, I.A.T.S.E.  
Grace Richardson  
SpotCo.  
Times Square Alliance  
Charles and Shelby Werner

## Young Patron Tickets

Mia Anderson  
Eyal Arad  
Lauren Borek  
Krista Schulz Corl  
Martin Dawson  
Francesca F. Fay  
Meghan Graper  
April Grunow  
Ally Hilfiger  
Allison Hodge  
Jamie Korey  
Hildy Kuryk  
Perriene Meistrell  
David Ostrander  
Meredith Ostrom

Rohit Pursum  
Sherrod Small  
Amanda Starbuck  
Christopher Trump-Retchin  
Elizabeth Yeatman

## Contributors

Sylvia Ablon  
Barbara Fife  
Natalie Fishman  
Martha Fling  
Gay and Carl Goldman  
Sharon Sullivan and Jeff Kindler  
Martin and Jill Handlesman  
Jane Reisen Harpel  
Treasurers & Ticket Sellers Union,  
Local 751, I.A.T.S.E.  
James and Ellyn Polshek  
Arthur Rebell  
Linea and George Roberts  
Laurel Schwartz  
Warren Serenbetz  
Michael and Joan Steinberg  
Ann and Thomas Unterberg  
Barbara and Alan Washkowitz



# SPRING GALA

MTC celebrated its annual Spring Gala on Monday, May 19, 2014 at Cipriani 42nd Street. This season's Gala honored **Thomas Secunda**, MTC Board Member and founding partner of Bloomberg, LLC. The Gala was co-chaired by **Marie T. Gallagher**, PepsiCo, Inc.; **Joseph H. Gleberman**, Goldman, Sachs & Co.; **Peter T. Grauer**, Bloomberg; **Peter J. Solomon**, Peter J. Solomon Company. All proceeds from the evening benefited MTC's efforts to fulfill its mission to be a home for emerging and established artists, to support new and groundbreaking works, and to instill the power of theatre in both our audiences and our students.

The evening began at 7 PM with a cocktail reception, which was followed by a seated dinner and a gala performance. Hosted by Harvey Fierstein and Debra Messing and featuring special guests, Michael R. Bloomberg and Tony® award winning actress Judith Light, the event featured performances from the casts of *After Midnight*, *Aladdin*, *Beautiful-The Carole King Musical*, *The Bridges of Madison County*, *Bullets Over Broadway*, *A Gentleman's Guide to Love and Murder*, *Hedwig and the Angry Inch*, *Les Misérables*, and *Rocky*.

The Spring Gala was enjoyed by more than 600 guests and raised over \$1.6 million. We wish to thank our co-chairs, our sponsors, our donors, and the artists who contributed to the evening's success.



Hosts Debra Messing and Harvey Fierstein



Kelli O'Hara,  
*Bridges of Madison County*

## Producer Tables

Bloomberg  
General Atlantic LLC  
Carson & Joseph H. Gleberman  
David C. & Laurie B. Hodgson  
Hitachi Data Systems  
Sharon Sullivan & Jeffrey B. Kindler  
Sumitomo Mitsui Banking Corporation

## Angel Tables

Cisco Systems  
Barbara J. Fife  
Lori Fife  
Geller and Company  
Deane A. & John D. Gilliam  
International Integrated Systems  
Juniper Networks  
Litespeed Electric  
Bethany & Robert B. Millard  
Liebert Corporation/Emerson Electric  
Lightower Fiber Networks  
Nancy & Duncan MacMillan  
Barbara Freitag & Edward Roberts

W. Gregg Slager/ Ernst & Young  
The Peter and Susan Solomon Family Foundation  
S.E.A.L. Security  
Jeffrey A. Sine & Samira Nanda Sine/  
The Raine Group, LLC  
Time Warner Cable  
US Trust  
Willkie Farr & Gallagher LLP  
Zegar Family Foundation

## Benefactor Tables

Sylvia Ablon  
Arenson Office Furnishings  
Arista/Presidio  
Davis Polk & Wardwell LLP  
Disney Theatricals  
Joseph T. Healey/ Korn/Ferry International Inc.  
Fiona and Alex Kirk  
Kleinknecht Electric Company Inc.  
KPMG LLP  
Fried, Frank, Harris, Shriver, & Jacobson LLP  
Andrew Martin-Weber

Mayer Brown LLP  
Paul, Weiss, Rifkind, Wharton, &  
Garrison LLP  
PepsiCo, Inc.  
Pricewaterhouse Coopers  
Susan & Jack Rudin  
Showtime Networks Inc.

### Producer Tickets

Checkpoint Software  
CMC Americas, INC.  
Jennifer and Richard DeScherer  
EMC Corporation  
Kirkland & Ellis LLP  
Level 3 Communications  
Edward and Sandra Meyer  
Russo Development & Sentinel  
Data Centers  
STUDIOS architecture  
Sparks  
SpotCo.  
United Building Maintenance  
UBS  
WSP  
Zayo/Above Net

### Angel Tickets

ABM  
Atimi Software  
Checkpoint Software  
Citrix  
Gay & Carl Goldman  
The New York Times  
Lisa & Robert Towbin

Turner & Townsend Ferzan  
Robbins

### Benefactor Tickets

Association of Theatrical Press  
Agents & Managers  
Denise Bernado & Eddie Muentes  
Ennead Architects  
Jill & Martin Handelsmann  
Lisa & Thomas Hazen  
Nancy & Morris Offit  
Susan & Arthur Rebell  
Joan and Michael Steinberg  
Treasurers & Ticket Sellers Union,  
Local 764, I.A.T.S.E.  
Christopher Till  
Times Square Alliance  
Mr. & Mrs. Clarkson W.  
Thornburgh  
Charles Werner

### Contributors

ADVA Optical Networking  
Anne Bernstein  
AT&T  
Norma Blackstone  
Boyden NY  
Linda & Arthur Carter  
Caldwell Wingate Co.  
Centerview Partners  
Deloitte and Touche  
Roberta & Steven A. Denning  
Direct Energy  
Dodger Properties LLC



Lena Hall,  
*Hedwig and the Angry Inch*

Goldman, Sachs & Co.  
Beth & Michael Fascitelli  
Peter & Laurie Grauer  
IBM International Foundation  
JACO Electronics  
Jujamcyn Theaters  
Henry & Elaine Kaufman  
Foundation, Inc.  
Martha Kellner  
Knight Electrical Services  
Kate Lear & Jonathan LaRok  
MC<sub>2</sub>  
Cindy & Brian Meehl  
Andy & Thomas Mendell  
Mercer  
Harriet Novet  
Roberta G. Olsen  
Palo Alto Networks  
Paravista  
James and Ellen Polshek  
Production Resource Group  
Reliable Power Alternative  
Corporation  
Sodexo  
Stemco Electric  
Jane and James Stern  
Sweet Hospitality Group  
Treasurers & Ticket Sellers Union,  
Local 751, I.A.T.S.E.  
Vornado Realty Trust  
Peregine Whittlesey  
Steven Zelin



Artistic Director Lynne Meadow, David C. Hodgson, Thomas F. Secunda,  
Michael Bloomberg, Judith Light and Executive Producer Barry Grove

# CORPORATE SUPPORT

Corporations who partner with Manhattan Theatre Club align their brand with one of New York's celebrated cultural institutions. Based on the level of giving, corporate benefits include invitations to special events such as our annual Spring Gala, ticket packages, use of private Patron lounges, employee discounts and more. For more information, call Patricia Leonard, Director of Institutional Giving, at (212) 399-3000 x4345.

MTC is deeply grateful for the support of the companies listed below. Listing reflects gifts made between July 1, 2012 and June 30, 2013.

---

---

## Corporate Producer (\$50,000+)

Bloomberg  
General Atlantic LLC\*  
Hitachi\*  
SMBC Global Foundation\*†  
Time Warner Cable  
U.S. Trust, Bank of America Private  
Wealth Management

## Corporate Leader (\$25,000+)

Cisco Systems\*  
Ernst & Young LLP\*  
Geller and Company\*  
International Integrated Systems\*  
Juniper Networks\*  
Liebert Corporation/ Emerson Electric\*  
Lighttower Networks\*  
Litespeed Electric\*  
Palo Alto Networks\*  
PepsiCo, Inc. \*†  
PwC\*†  
The Raine Group LLC \*†  
S.E.A.L. Security\*  
Showtime Networks Inc.\*†  
Willkie Farr & Gallagher LLP\*

## Corporate Pacesetter (\$15,000+)

Arenson Office Furnishings\*  
Arista/Presidio\*  
Davis Polk & Wardwell LLP\*  
Disney Theatricals\*  
Faces & Names  
Fried, Frank, Harris, Shriver &  
Jacobson LLP\*  
Hurley's Saloon  
IBM\*  
Kleinknecht Electric Company Inc.\*  
Korn/Ferry International Inc.\*

KPMG LLP\*  
Mayer Brown\*  
Paul, Weiss, Rifkind, Wharton &  
Garrison LLP\*  
Russo Development & Sentinel Data  
Centers\*  
The Walt Disney Company

## Corporate Benefactor (\$10,000+)

DeWitt Stern Group, Inc.  
Kirkland & Ellis LLP\*  
Sodexo\*  
Sparks\*  
SpotCo\*†  
United Building Maintenance\*  
Vornado Realty Trust\*  
Zayo/Above Net\*

## Corporate Partners (\$5,000+)

AT&T\*  
Checkpoint Software\*  
Chubb Group of Insurance Companies  
CMC Americas, INC\*  
ConEdison Company  
Deloitte and Touche\*  
EMC Corporation\*  
Level 3 Communications\*  
MAC Cosmetics  
The Moody's Corporation  
Paravista\*  
Sandbar\*  
Stemco Electric\*  
STUDIOS architecture\*  
Sweet Hospitality Group\*  
UBS\*  
WSP\*

## Corporate Patrons (\$1,000+)

ABM Industries\*  
AOL

Atimi Software\*  
ATPAM – Association of Theatrical  
Press Agents & Managers\*  
Boyden NY\*  
CAA\*  
Centerview Partners\*  
Christopher Campbell/Palace  
Production Center  
Citrix\*  
Clear Channel Outdoor  
CMT/ABC  
Darren P. DeVerna, Production  
Resource Group  
Direct Energy\*  
Dodger Theatricals\*  
Ennead Architects\*  
Feigen Advisors  
Gimme! Coffee  
Jaco Electronics\*  
John Pearse® Strings  
Jujamcyn Theaters\*  
Knight Electrical Services\*  
MC<sub>2</sub>\*  
Mercer\*  
The New York Times\*  
Production Resource Group\*  
RBC Wealth Management\*  
Southwest Airlines\*  
Steinway Hall  
Theatrical Stage Employees Union,  
Local One, I.A.T.S.E. \*†  
Theatrical Wardrobe Union,  
Local 764, I.A.T.S.E.\*  
Times Square Alliance\*†  
Treasurers and Ticket Sellers Union,  
Local 751 I.A.T.S.E. †  
Turner & Townsend Ferzan Robbins\*  
Wal-Mart Stores, Inc.  
Wells Fargo

---

---

\* Includes support of MTC's Spring Gala

† Includes support of MTC's Winter Benefit

# FOUNDATION AND GOVERNMENT SUPPORT

MTC has long-standing relationships with foundations throughout the United States that provide essential support of annual operations, productions, artistic development and educational programming. MTC also receives program support and capital funds from government agencies and public leaders to keep our initiatives and facilities robust. For information, call Patricia Leonard, Director of Institutional Giving, at (212) 399-3000 x4345.

MTC is very thankful for the generous support of the organizations listed below, as well as the advocates for the arts who work within them. Listing reflects gifts made between July 1, 2011 and June 30, 2012.

## \$100,000+

Booth Ferris Foundation  
 Edgerton Foundation  
 Dr. Gerald J. and Dorothy R. Friedman Foundation  
 The Hearst Foundations  
 The Blanche and Irving Laurie Foundation  
 The Andrew W. Mellon Foundation  
 New York City Department of Cultural Affairs  
 The Shubert Foundation, Inc.  
 Alfred P. Sloan Foundation  
 The Harold and Mimi Steinberg Charitable Trust

## \$50,000+

The JPB Foundation  
 The Kaplen Brothers Fund  
 National Endowment for the Arts  
 New York State Council on the Arts  
 Starr Foundation  
 SMBC Global Foundation, Inc.  
 Ernst C. Stiefel Foundation  
 The Tow Foundation

## \$25,000+

The Lucius N. Littauer Foundation  
 Leon Lowenstein Foundation  
 The Fan Fox and Leslie R. Samuels Foundation Inc.  
 The Skirball Foundation  
 The Isak and Rose Weinman Foundation, Inc.

## \$15,000+

Laurents/Hatcher Foundation, Inc.  
 The Rona Jaffe Foundation  
 The Jerome Robbins Foundation

## \$10,000+

The Aeroflex Foundation  
 The Annenberg Foundation  
 The Marc Haas Foundation  
 The Carl Jacobs Foundation  
 Leon Levy Foundation  
 The Peter Jay Sharp Foundation  
 The Seth Sprague Educational and Charitable Foundation  
 Sy Syms Foundation

## \$5,000+

42<sup>nd</sup> Street Development Corporation  
 The Bulova Stetson Fund  
 The Frederick Loewe Foundation, Inc.  
 Harkness Foundation for Dance  
 Jephson Educational Trusts  
 Elroy and Terry Krumholz Foundation  
 Mellam Family Foundation  
 National Corporate Theatre Fund  
 The Silverweed Foundation  
 Michael Tuch Foundation

## \$1,000+

Actors' Equity Foundation  
 Lily Auchincloss Foundation  
 The Friars Foundation  
 Rita J. and Stanley H. Kaplan Family Foundation, Inc.  
 Dorothy Loudon Foundation/  
 Lionel Lerner  
 The Maurer Family Foundation  
 The Rodgers & Hammerstein Foundation  
 The Ralph and Luci Schey Foundation  
 The Schloss Family Foundation  
 Shamos Family Foundation  
 G. Whitney Snyder Charitable Fund  
 The James S. and Lynne P. Turley Ernst & Young Fund for Impact Creativity

*MTC thanks the following agencies and officials for their generous support:*



New York City  
 Department of  
 Cultural Affairs

New York City Mayor  
 Bill DeBlasio

The Honorable  
 Melissa Mark-Viverito,  
 Speaker, New York City Council

The Honorable Gale Brewer,  
 Manhattan Borough President



New York State  
 Council on the Arts



National  
 Endowment  
 for the Arts

# INDIVIDUAL SUPPORT

Since its founding, Manhattan Theatre Club has been embraced by a generous community of donors committed to supporting our mission to develop and produce significant new work by emerging and established playwrights, and to engage thousands of students every year by facilitating access to that work. In recognition of their contributions, MTC donors receive unparalleled service, recognition, access and benefits as members of our Individual Giving programs. For more information, please visit [ManhattanTheatreClub.com](http://ManhattanTheatreClub.com) or call Emily Fleisher, Associate Director Development, at (212) 399-3000 x4146.

More than 1,500 households contributed more than \$4.9 million to MTC in the 2013-14 fiscal year. We thank the following individuals who supported MTC last season.

## \$100,000+

Glenn A. Britt  
Rosa and Robert Gellert  
David and Laurie Hodgson  
Ann M. Limberg  
Andrew J. Martin-Weber  
Robert and Bethany Millard  
The Secunda Family Foundation  
Michael A. Steinberg  
Sharon Sullivan and Jeffrey B.  
Kindler

## \$50,000+

Matthew C. Blank  
Barbara J. Fife  
Lori and Mark Fife  
Deane A. and John D. Gilliam  
Joe and Carson Gleberman  
Roberta G. Olsen  
Peter J. Solomon Family  
Foundation

## \$25,000+

Sylvia and Ralph Ablon  
Beth and Ravenel Curry  
Alex and Fiona Kirk  
W. Loeber Landau  
Ned J. Lustbader  
Jeffrey A. Sine  
Sue and W. Gregg Slager  
Grant and Jacqui Smith  
Lisa & Robert Towbin  
Jack and Joyce Yang

## \$15,000+

Nancy Bader and Michael  
Leventhal  
Roger and Brook Berlind  
Michael Coles and Edie Langner  
Jeanne Donovan Fisher  
Edward and Lori Forstein  
Gay and Carl Goldman  
Joseph T. Healey  
Tom and Susan Hertz  
Paul Kopperl  
Lynn and Elizabeth Mangum  
Renée Petrofes and Gerry  
McNamara  
Reuben and Lisa Richards  
Kim and Marc Stern  
Edith and Michael Weinberg  
*and one anonymous donor*

## \$10,000+

Amy and David Abrams  
Jody and John Arnhold  
The Beker Foundation  
Raymond and Lucille Benedetto  
Charitable Fund  
Sol and Margaret Berger  
Foundation  
Denise Bernardo  
Joseph Blady and Frances  
McGrogan  
Gina and David Boonshoft  
Steven and Joy Bunson  
Glenorchy P. Campbell  
Ellen Chesler and Matthew J.  
Mallow

Adrienne and Jerry Cohen  
Jill and Alex Dimitrief  
Elyssa and William Friedland  
Mary Ann and Vincent Q.  
Giffuni  
Jennifer and Bud Gruenberg  
Russel T. Hamilton  
R & H Healy Family Foundation  
Doctors Irma and Andrew Hilton  
Barbara and Eric Hippeau  
Janet and Howard Kagan  
George and Bicky Kellner  
Bill and Sheila Lambert  
Barbara and J. Robert Mann, Jr.  
Pamela Milam and Jamie Fowler  
The Monteforte Foundation  
Judith and Burton Resnick  
Edward R. Roberts and Elaine  
Krauss  
Nancy and Marc Roberts  
Marlene Sandler  
Dr. Carl and Aviva Saphier  
The Irving and Sara Selis  
Foundation  
Mr. and Mrs. Martin Sosnoff  
Barry C. Waldorf and Stanley  
Gotlin  
In Memory of Arthur Warner  
Charles P. and Shelby S. Werner  
Anita and Byron Wien  
Francis H. Williams  
Dr. Kenneth and Carmela  
Wolosz, Rhino Theatre  
*and two anonymous donors*

# INDIVIDUAL SUPPORT

## \$6,000+

Dr. and Mrs. Christoph Adamski  
 Susan and Steven Albert  
 Martin Atkin and Reid Balthaser  
 Hank and Phyllis Beinstein; In memory of  
 Nina Wasserman  
 Anne L. Bernstein  
 Genie and Bob Birch  
 Emma and Eli Bluestone  
 Ruth and Louis Brause  
 Judith Champion and Mel Litoff  
 Anita Chanko  
 Sarah E. Cogan and Douglas H. Evans  
 Charlotte and David Cohen  
 Bert Davis and Harriet Reitman  
 Marjorie and Alan Doniger  
 Lisa and Sanford Ehrenkranz, Nina W.  
 Werblow Charitable Trust  
 Natalie Fishman  
 Dr. and Mrs. David F. Frankel  
 Mr. James Gleick and Ms. Cynthia Crossen  
 Barbara Goldsmith Foundation  
 Carmen Grossman  
 Caryn Hemsworth and John Cucciniello  
 Stephen Jaffe MD  
 Drs. Robert and Anna Kelly  
 The Edward F. Limato Foundation  
 Helen and Jules Kornblau  
 William and Naomi Kramer  
 Douglas and Judi Krupp  
 Laurie M. Tisch Illumination Fund  
 Irwin S. Scherzer Foundation  
 Diane and Bill Lloyd  
 Ellen and James S. Marcus  
 Edwina and Marvin Marks  
 David and Anita Massengill  
 Nina B. Matis  
 Edward E. Matthews  
 Richard and Ronay Menschel  
 Dennis and Shelly Newman  
 John and Joan Polcari  
 Robert Press, M.D.  
 Mary Ann and Bruno A. Quinson  
 Grace E. Richardson  
 Merrill Rose  
 Jamie Rosenthal Wolf, David Wolf, Rick  
 Rosenthal, and Nancy Stephens  
 Fran Samuels  
 Mr. Eric and Mrs. Mira Spektor  
 Christie Spiro  
 Janet Stahl and David Herz  
 James and Jane Stern  
 R. L. Stine and Jane Stine  
 Dr. and Mrs. Constantine Tsitsera  
 Melissa and Gerald Uram  
 Charles S. and Jacqueline M. Warren  
 Weinschel/Goldfarb Foundation



Board Member Lisa Towbin, Board Member Marie Gallagher and guest, and Board Treasurer Gregg Slager

The Wenig Family  
 Susan and Benjamin Winter  
*and three anonymous donors*

## \$4,000+

Karen and Ed Adler  
 Felix and Heather Baker  
 Toast and Amy Barest  
 Richard and Diana Beattie  
 Esme and Roger Berg  
 Arlene and Harvey Blau  
 Mara and Jonathan Blum  
 William B. and Jane Eisner Bram  
 Andrea Brown and Robert Levande  
 Ann M. Butera  
 Marilyn and Marshall Butler  
 Robert Carlock  
 Andrew Cascone  
 Miriam Goldman Cedarbaum  
 Allan Chasanoff and Joanna Bayless  
 Judith and Michael Chasanoff  
 Phyllis Chernin  
 Mary Cirillo-Goldberg and Jay Goldberg  
 Valerie Clifford  
 Jill and Irwin Cohen  
 Lillian and Joel J. Cohen  
 Betsy and Alan D. Cohn  
 Isabel E. Collins  
 Joan Ganz Cooney and Peter G. Peterson  
 Catelynn Mary Cunningham  
 Boykin Curry and Celerie Kemple  
 Danielle DeMaio and Michael Paskin  
 Jamie deRoy  
 Margaret and Lester Edelman  
 Dr. Christopher and Mrs. Candace Edelmann  
 Fiona and Harvey Fein  
 Cynthia and Herbert Fields  
 Freddi S. Finegood and Ethan Horwitz  
 Barbara H. Freitag  
 Frieda and Roy Furman  
 Ms. Nancy J. Gallt  
 Stephen Glick and Margot Metzger  
 Maya and Larry Goldschmidt  
 Hana and Allan Green  
 Dr. Ruth Greer  
 Joy Henshel  
 Mary and Robert Higgins  
 Robin A. Jones  
 Linda and Alan R. Kahn  
 Earle and Judy Kazis  
 Alan and Lauren Klein  
 Jane and Charles Klein  
 Kathryn Koslow and Peter van Dell  
 Laura S. Langford  
 Chad A. Leat  
 Xia and Richard Leder  
 Dalia and Larry Leeds  
 Julie and Paul Leff  
 Richard and Kathleen Levin  
 Imelda Liddiard  
 Jarrett and Maria Lilien  
 Merritt and Candy Lutz  
 Caryn and Jim Magid  
 Richard and Jillian Martin  
 Claire and Cornelius Marx  
 Joe Masteroff  
 Diane and Adam Max  
 Tom and Musa Mayer  
 Stephen and Carolyn McCandless  
 Matthew M. McKenna  
 Marianne and Steve Mills  
 Drs. Yale Mitchel and Sharon Molinas  
 Kathryn Myers  
 Wilson and Eliot Nolen  
 JoAnne Olian  
 Dana and Ethan Orlinsky  
 Joseph J. Palermo and Justin W. Sherwood  
 David Prager and Janice Friedman  
 Bill and Diane Pulleyblank  
 Rapaport-Shallat Foundation  
 Chris Reber  
 Paula and Ira Resnick  
 Peggy S. Rice  
 Alan and Madonna Robinson

# INDIVIDUAL SUPPORT

## \$4,000+ continued

Jeannette and Jonathan Rosen  
 Tina and Paul Rotstein  
 Barbara H. Rudd  
 Kip Said and Robert Chan; In memory of  
 Jonathan Alper  
 Rudy and Elaine Schott  
 Jolie Schwab and David Hodes  
 Frank Schwarzer and Cindy Muth  
 Roger Schwed and Laura Dukess  
 Thelma and Warren Serenbetz  
 Lois and Leonard Sharzer  
 Susan and Zachary Shimer  
 Jerome A. Siegel  
 Joseph Sirola  
 Helena and Stephen Sokoloff  
 Richard and Ann Solomon  
 Gregory St. John and Gary McKay  
 Alec Stais and Elissa Burke  
 David and Linda Strauss  
 Mr. and Mrs. Dennis D. Swanson  
 Kathleen E. Synnott  
 Don Weimer and Mary Cunningham  
 Cathy and Stephen Weinroth  
 Jane and Mark Wilf  
 Joan and James Wilson and Elizabeth P.  
 Madden  
 Stephen R. Wilson  
*and four anonymous donors*

## \$2,000+

William Aarnes and Elizabeth Carney  
 Robert and Mary Beth Aberlin  
 Audrey and Sargent Aborn  
 Dr. Ivan and Jean Abrahamson  
 Kathleen and Ernest Abrahamson



**Board Member Bob Sinclair  
 and guest**

William and Vicki Abrams  
 Carol and William Achenbaum  
 Alyson K. Adler and William H. Green  
 Ann and Ken Adler  
 Allen Adler and Frances Beatty  
 Joyce and Lou Adolfsen  
 Gerald Aksen  
 Vincent Alfieri and Kerstin Larsen  
 Alimonti Law Offices  
 Matteo P. Alioto  
 Rosemary Alito  
 David and Cornelia Allan  
 Tara Allmen, M.D.  
 Mary and Steve Almassy  
 Peter Almonte  
 Mashael Alshalan  
 David and Nina Altschiller  
 Mr. and Mrs. Greg Amato  
 Michel and Tammy Amsalem  
 Peggy Anderson  
 William Andrews and Lois Blume  
 Gregory and Rosann Anselmi  
 Karen and Edward Applebome  
 Jeffrey Applegate  
 Jim Arata  
 Liz Armstrong  
 Madeleine and David Arnow  
 Kathi and Peter Arnow  
 David and Inette Aronson  
 John Arpino  
 Thomas and Maria Ascher  
 Athelera LLC  
 Amy Attas and Stephen Shapiro  
 Andrew D. Austin and Michael R. Sonberg  
 Hany Awadalla  
 Judge and Mrs. Roy Babitt  
 James and Nike Bach  
 Thelma and Bob Baechtold  
 Oliver Baer  
 Paul and Marge Baeri  
 Earl Bailey  
 Sarah and Doug Baird  
 Linda and Jeremy Balmuth  
 Susan and Alan Bandes  
 Amelia M. Banino  
 Susan Barbash and Eric Katz  
 Sarah Page Bareau  
 Robert and Tracy Baron  
 Betsy Smith and John Barrie  
 Sanford L. Batkin  
 Sharon and Stephen Baum  
 Eileen and Fred Becker  
 Simone Bedient  
 Karakian and Margaret Bedrosian  
 Linda W. Beech and Thomas G. Schueller  
 Marla Behrman  
 Carrie and Art Bell  
 Joseph Bell and Peter Longo  
 Karyn and Charles Bendit  
 Sandra and Harvey Benenson  
 Ms. Pam Benjamin  
 Judith Bennis and Audrey Schlaepfer  
 Karen Kayser Benson  
 Barry and Susan Berg  
 Marge and Egon Berg/Linda Heller  
 George and Marilyn Berger  
 Jane Berkowitz  
 Patsy Berman  
 Steffi and Robert Berne  
 Gene Bernstein and Kathy Walsh  
 Jill and David Bernstein  
 Dr. Barbara Weinstein and Louis Bernstein  
 Barbara and Paul Bernstein  
 Ann and Joel Berson  
 Richard Bethel and Patricia McConnell  
 Penelope and John Biggs  
 Terry L. Bigler and Terry S. Kurtz  
 Robert and Adrienne Birnbaum  
 Jill and John C. Bishop, Jr.  
 Joan S. Black  
 Jeff Blatt and Erin Foster  
 Randi Blatt  
 Allison Blinken  
 Adele G. Block  
 Ruth and Robi Blumenstein  
 Avram and Sharon Blumenthal  
 Todd R. Blumenthal  
 Claire and Richard Bock  
 Denise Bodak  
 Frederick M. Bohlen  
 Tema and Mark Bomback  
 Joanne Bornstein  
 Adele and Jack Borrus  
 Barbara and Michael Borys  
 Adele Boskey and Jay Gerstein  
 Kathy and Al Brand  
 Diane Brandt and Martin Lewis  
 Donald and Susan Brant  
 Phyllis Eve Bregman  
 Bruce Breimer and Lorna Doran  
 Dr. and Mrs. Bruce Brener  
 Robert Brenner  
 Jane C. Bressler  
 Lester and Miriam Brickman  
 Loreli Briel and Robert McHenry  
 Mary Jane Brock  
 Alice Brod  
 Carole Brookins  
 Jenny Brorsen  
 Stephen Brussels and Bryan Hao  
 Leonard and Joanne Brumberg  
 Robin and Neil Buchalter  
 Jane and Peter Buchi  
 Don and Maggie Buchwald Foundation  
 Diana Buckhantz  
 Aviva and Martin Budd  
 Larry and Joan Budish  
 Joan Buehler and Lois Zenkel  
 Deborah Burner  
 Robert and Virginia Burns  
 Susan and David Burris  
 Anthony and Anne Burton  
 Howard and Doris Busloff  
 Katherine Butler

# INDIVIDUAL SUPPORT

## \$2,000+ continued

Hope Byer  
 Matthew Callahan and Marlene Dodes-Callahan  
 Chris and Colleen Canavan  
 Mildred Caplow  
 Lorenzo Carcaterra and Susan Toepfer  
 Vivian Cardia  
 Paul D. Carey and Juan Carlos Fernandez  
 Andree Carr  
 Carr Charitable Trust  
 Kathryn and Gideon Cashman  
 Susan Castellan and Michael Sarlin  
 Marc Castle and Tom Keegan  
 In Loving Memory of Andres Castro  
 Ronald and Ronni Casty  
 Barbara Cates  
 Rory J. Centanni and Stephen J. Rojas  
 Marilyn and Michael Cerny  
 Maureen Burgess Chalfen  
 Juju Chang and Neal Shapiro  
 Helen Chapman  
 Carol and Stephen Chase  
 Linda R. Chen and Robert B. Sculthorpe  
 Nancy Deering and Garry Chinn  
 Pedro and Maria Chomnalez  
 Amy and Gary Churgin  
 Dale and Peter Claman  
 Marilyn Clements  
 Ursula and Walter Cliff  
 Leslie and Sylvia Cline  
 Rodgin and Barbara Cohen  
 Betsy Cohen and Marc Devorsetz  
 Stephanie and Charles Cohen  
 Doris and Julian Cohen  
 Nadia and Edwin Cohen  
 Joan and Harvey Cohen  
 Naomi and Andre Cohen  
 Hon. Robert L. and Mrs. Elaine Cohen  
 Dr. and Mrs. James Colasacco  
 Corinne Colen  
 John J. Collins and Lynn M. Collins  
 Barbara and Michael Colodner  
 Margaret Conklin and David Sabel  
 Teresa and Dan Conroy  
 Debra Cooper  
 Eva and Leslie Cooper  
 Gail and Milton Cooper  
 Charles Cordray  
 Beverly and Seymour Corenthal  
 Kim and Stan Corfman  
 Sophia Corona  
 Rick Cotton  
 Angela and Stephanie Cozzi  
 Barbara Cramer and Milton Ingerman  
 Douglas S. Cramer Foundation  
 Mr. and Mrs. D. Crosley  
 Ellie and Edgar M. Cullman, Jr.  
 Susan Cullman and John Kirby  
 Danielle Curi and Max Herrnstein  
 Karen and Robert D'Aleo  
 Marios and Anna Damianides

Mr. and Mrs. John H. Damiano  
 Barbara and Douglas Dannay  
 In memory of Edgar Dannenberg  
 Lucy and Mike Danziger  
 Peggy and Dick Danziger  
 Ann E. Darby and William C. Dudley  
 Jacqueline Dartley  
 Douglas and Sandra Davidson  
 Judith and Evan Davidson  
 Sue and Evan Dawson  
 Dr. and Mrs. Charles Debrovner  
 Uta C. Dee  
 Lauren Howard DePalo  
 Susan Deutsch and Carlisle Towery  
 Mr. and Mrs. Edwin R. DeYoung  
 Elizabeth and John Doble  
 Joan and Ed Doherty  
 Gary Dolan and Wendy Bellus  
 Liz Lewis Donenfeld and Alan Donenfeld  
 Dr. Christine Donnelly and Dr. Harold Starkman  
 Linda L. D'Onofrio  
 Jonathan and Melissa Dorfman  
 Lesley Dormen and Quentin Spector  
 Scott and Susan Douglass  
 In Memory of Murray Drach  
 Nina Duchaine and Rory Radding  
 Karen Dukess and Steve Liesman  
 Stacey and Sanford Dumain  
 Dr. Deborah Dumont  
 Bob Dysart  
 Amy Kaplan Eckman and Dr. Steven Pally  
 Laurie and Jeffrey Edelstein  
 Richard L. Edwards and Carol Friedman  
 Ms. Joni W. Ehrlich  
 Suzan and Fred Ehrman  
 Dawn and Andy Eig  
 Andrew and Amy Einhorn  
 Debbie and Ron Eisenberg  
 Clifford and Bonnie Eisler  
 Jill Eisner  
 Nancy and Henry Elghanayan  
 Mel and Maxine Elkins  
 Dorothy and Don Ellenberg  
 David Ellenhorn and Roberta Goodman  
 Peggy and Mark Ellis  
 Don Ellwood and Sandra Johnigan  
 Michael L. Emmel  
 Mr. and Mrs. Thomas Engel  
 Rosalyn and Irwin Engelman  
 Antoinette Ercolano and Donna Lemaster  
 Scott and Beth Esbin  
 Carol and Henry Essert  
 Eleanor Ettinger  
 Faye and Craig Evans  
 Mrs. Hollis and Michael Even  
 Carol and Bruce Factor  
 Andrea Fahnstock  
 Mr. and Mrs. Michael Fara  
 D. Fein  
 Carol Feinberg  
 Carol Feinberg and Kenneth Gilman  
 Ira M. Feinberg



**Laura Baron, President of the Blanche and Irving Laurie Foundation, with husband Norman Baron**

Murray Feiss  
 Nancy Feldman  
 Randi and Warren Feldman  
 Linda and Martin Fell  
 Bill Felty and Antonio Muniz  
 Audrey and Harvey Feuerstein  
 David and Judith Fields  
 Helene Fields and Aaron Severini  
 Jill and Howard Fife  
 Eileen and Allan Fink  
 Florence L. Finkle  
 Ruth Finley  
 Dr. Michael B. First and Leslee Snyder  
 Jill Levy-Fisch and Peter E. Fisch  
 Charlotte Moses Fischman  
 Dr. Jeffrey Fishberger  
 Arlene and Daniel Fisher  
 Annette and Barry Fisherman  
 Megan Flanigan  
 Marta and Gary Flaum  
 Susan and Arthur Fleischer, Jr.  
 Howard Fleischman  
 Patricia A. Florness  
 Laura Flug  
 Renee and Sy Flug  
 Rev. Bruce W. Forbes  
 Georgia Griscom Ford  
 Martin and Susan Fox  
 Wm Fox Jr. Foundation and Barbara W. Fox-Bordiga  
 Ruth Frangopoulos  
 Evan and Diane Fraser  
 Candice and John Frawley  
 Ruth Freeman

# INDIVIDUAL SUPPORT



**Board Member and THE COMMONS OF PENSACOLA and CASA VALENTINA Producing Partner Andrew Martin-Weber with Sarah Jessica Parker at opening night of THE COMMONS OF PENSACOLA**

## **\$2,000+ continued**

Bill and Caryn Freilich  
 Andrew Freireich and Tina Potter  
 Mr. Richard Freundlich  
 Martin Fridson and Elaine Sisman  
 Dr. and Mrs. Eugene Friedberg  
 Alice L. and Lawrence N. Friedland  
 Carole and Michael Friedman  
 Daniel S. Friedman and Elizabeth Ann Friedman  
 Fredarica Friedman  
 Marc and Deborah Frost  
 Susan Frushtick  
 Sue and Ken Fuirst  
 Manuel and Vivian Furer  
 Joseph and Marlene Gabriele  
 Irma and Bob Gal  
 James C. Gale and Kimberly Taylor  
 Patrick Gallagher and Robert Watson  
 Tom Gallagher and Alice Jarcho  
 Jonathan and Amy Gallen  
 James and Eunice Galligan  
 Drs. Teri and Michael Gamble  
 Johanna and Leslie Garfield  
 Anne G. Garonzik  
 Ellis and Jackie Gaskell  
 Robert Gatto  
 Ora and Myron Gelberg  
 Joel C. Gelbman  
 Ria and William Gelfman  
 Cheryl and Harvey Geller  
 Michele and Terry Geller

Robin L. Gellar  
 Diane and Joe Genova  
 Carolyn D. Gentile  
 Maxine L. Gerson  
 Jeannie Gerzon and Bish Makuch  
 Judith Gibbons and Francisco Scattone  
 Mr. James C. Giblein  
 Jill Gibson  
 Alexander E. Gilbert  
 Alfred A. and Sondra Gilbert  
 Joan S. Gilbert  
 Mary Gilbert  
 Richard and Belinda Gilbert  
 Thomas F. and Marjorie Gilbert  
 Virginia E. Gilbert  
 Edda and James Gillen  
 Melissa and Barry Gillman  
 The Gilston Family  
 Barbara and Henry Ginsberg  
 Dr. Donald and Judith Ginsberg  
 Bob Ginsberg  
 Shirley and David Ginzberg  
 Laurie and Stephen Girsky  
 Cynthia and Daniel Gladis  
 Linda and Henry Glass  
 Mr. Richard J. and Dr. Linda B. Glazer  
 Susan and Leonard Gleicher  
 Virginia P. Gliedman  
 Pam and Bob Goergen  
 Charles and Debra Goertz  
 Andrew and Judy Gold  
 Gerry and Irwin Goldberg  
 Holly Goldberg  
 Rita Goldberg  
 Agnes Goldberger and Mayer Jacobovits  
 Laurie Goldberger and Leslie Kogod  
 Sylvia Golden  
 Alice and Stuart Goldman  
 Liz and Jim Goldman  
 Gloria Goldman  
 David J. Goldring  
 Gideon and Hana Goldstein  
 Patricia Goldstein  
 Wendy J.S. Goldstein and Mark N. Goldstein, MD.  
 Ronald Goldstock and Judith Friedman  
 Betty Golomb  
 Marianne Goodman MD  
 Sarah and Bob Goodman  
 Senator Roy M. Goodman  
 Donald H. Goodyear, Jr.  
 Lisa and Greg Gordon  
 Michael Gordon  
 Judith and Sheldon Gordon  
 Leonard and Judith Gordy  
 Lois and Joseph Gottlieb  
 Elizabeth Gouger and Alen Shapiro  
 Fran and Mike Grabow  
 Carey Graeber and Andrew Kozinn  
 Clara B. Grant  
 Anne L. Gray and Steven L. White  
 Madelyne Gray

David Green and Karen Segal  
 Eve and Tom Green  
 John F. Green  
 Maxine and Bob Greenberg  
 Alison and Michael Greene  
 Lisa Greene and Richard Hamburger  
 Andrea and Robert Greene  
 Paul and Hilda Greenfield  
 Dr. Carol S. Greenwald  
 John DeWitt Gregory  
 Bruce and Jo Grellong  
 David and Janice Groden  
 Marilyn and Ron Grossman  
 Eleanor Grosz and Larry Zweifach  
 Lori and Stuart Grover  
 Mrs. Harriet Gruber  
 Peter Gruenberger and Dr. Carin Lamm  
 Julie and Ivan Grunberger  
 Riane Gruss  
 Terri Guarnieri and Daniel Gross  
 Jennifer Gundlach and Michael Greenspon  
 Beatrice and Robert Gutman  
 Maria Guttadauria, MD  
 Barbara Gydé  
 Gunilla N. Haac  
 Jennifer and Jason Haas  
 Gary Habelitz and Michele Flicker  
 Al and Hope Hageman  
 Max and Eliane Hahn  
 Louise Hainline and Micha Tomkiewicz  
 Judith and Bob Hall  
 Steve Halprin  
 Jill and Martin Handelsman  
 Gladys and Edwin Hanft  
 Dora and Noah Hanft  
 Brian Hannon and Sharon Krieger, M.D.  
 Catherine Hansen and David Bateman  
 W. David Hardy, MD and Barry Goldblatt  
 Donna Harkavy  
 Sheldon and Margery Harnick  
 Jessica Harper  
 Ellen and Fred Harris  
 John Harris and Donald Press  
 Susan T. Harris  
 Mychal D. Harrison  
 Gail Hart and Mark Gasarch  
 Dr. and Mrs. David A. Harvey  
 Wendy and David Hashmall  
 Kathleen Haskins  
 Kathleen Hatab  
 Tom and Lisa Hazen  
 Jessica and Douglas Healy  
 Lee and Kenny  
 Steven Hecker and Rhesa Williams  
 Eileen and David Heckerling  
 Sheila and Isaac Heimbinder  
 Molly K. Heines and Thomas J. Moloney  
 James Held  
 Genevieve and David Hendin  
 Laura Henkle  
 Joan Hennessey

# INDIVIDUAL SUPPORT

## \$2,000+ continued

Paul and Diane Herman  
Rhoda Herrick  
Sue Hessel and Karen Dahle  
Edythe F. Heyman  
Kathleen and Jay Hibbs  
Ross W. and John A. Higgins  
Patricia Mead Higgins  
Martha Hirst  
Carole and Richard Hochhauser  
Jonathan and Judy Hoff  
Bunny and Jack Hoffinger  
Barry Hoffman and Jane Weiss  
Eugene Paceleo and Evan Hoffman  
Willa and Larry Hoffner  
Dr. and Mrs. Friedrich Holzapfel  
Collette and Marv Hopkins  
Lois and John Horgan  
Marie and Richard Hornstein  
Harris and Randee Horowitz  
In Memory of J. Scott Howard  
Joseph Hunsberger  
Jane M. Hunter  
Kenneth Hupart and Merri Rosenberg  
Fern Hurst and Dr. Peter Rubin  
Robert and Sally Huxley  
Gordon and Carole Hyatt  
The Trampoline Group  
Joan and Guy Iervese  
Jody and Michael Innerfield  
Adam and Irina Irgon  
Mrs. Gerard F. Irwin  
Jill and Ken Iscol  
Kathy and Bob Iulucci  
Mr. and Mrs. Robert Ivosevich  
Michael C. Jackson  
Jacob Burns Foundation  
Cathy and Andrew Jacobs  
Ellen and Michael Jacobs  
Helen T. Jacobs  
Sherry and Stephen Jacobs  
Amy and David Jaffe  
Lola Jaffe  
June Tanner Jaffee  
Mr. and Mrs. Stephen Jeffries  
Ira and Andrea Jolles  
Barbara and Donald Jonas  
Pamela Jones and Craig Russell  
Rochelle D. Jones  
Miles and Judy Josephson  
Mr. and Mrs. Jacob Judd  
Susan Kagan  
Tudy and Hy Kahn  
Barbara J. Kane  
Steven Kaplan and Court Whisman  
Mr. and Mrs. Ira B. Kapp  
Dr. Barbara Kardon and Mr. Sydney Mazur  
Dr. Anna Karidas  
Amy L. Katz and Irving Scher  
Stan and Joann Katz  
Joan Kaufman

Steven Kaufman and Claudia Kaufman  
Loretta and Victor Kaufman  
Bill and Paulette Kaufmann  
Ms. Ronnie Kaye  
Tom Kearns  
Elizabeth and Daniel Keegan  
Jane and Peter Keegan  
Michael Keller and Pamela Sousa  
Carol Kellermann and Mark O'Donoghue  
Allegra and Martin Kelly  
Denise Kelly  
Bill Kelly  
Mr. and Mrs. Ralph W. Kern  
David Kernahan  
Gloria Kessler  
Regina Kessler  
Rikki and Yale Kessler  
Douglas Kesten  
Cynthia Killion  
Jennifer and Andrew Kind-Rubin  
Rita and Ben King  
Steve and Essie King  
Tom and Jody King  
Joanne Kinsey  
Noel Kirnon  
Allison Drew Klein  
Jacqueline and Herbert Klein  
Eileen Kling and Lou Kling  
Robert and Betsy Knapp  
David and Anita Knechel  
Marvin and Rosalind Kochman  
Richard and Debra Kolman  
Kevah and Michele Konner  
Sharon and Lewis Korman  
Wendy L. Kornreich  
Lillian E. Kraemer  
Barbara and Jerry Krasner  
Diane Krasnoff  
David and Susan Kraus  
Amy Sklar and Ronald B. Kremnitzer  
Sheila and Bob Kresch  
Roberta and Arnie Krumholz  
George and Liz Krupp  
John Kuehn and Elaine Crowley  
Miodrag Kukrika, M.D.  
Elizabeth J. Kurth and Evan G. Birks  
Jerome Kurtz  
Liza and Neil Kurtz  
Jeffrey Kwong and Bob Moriarty  
Jerry and Wendy Labowitz  
Robb Lady  
Solange Landau  
Charlene Landis and Thomas Leslie  
Ken and Rosalind Landis  
Elizabeth S. Lasdon  
Lee and Richard Laster  
Anna Law and Adam Isaacson  
Elyse Lazansky and Eric Kreutzer  
Helga and Marty Lazarow  
Mark and Taryn Leavitt  
Jeffrey and Diane LeBenger

Georgette LeBlanc  
Cynthia Leder and Jeff Glekel  
Diane Lederman and Arthur Levin  
Karen Lehmann-Eisner and David Eisner  
Mr. Richard and Mrs. Carole Leibner  
Laura and Joel Leizer  
Rochelle Lerch  
Gabrielle and Richard Lesser  
Greg and Dawn Lester  
Drs. Elaine and Howard Leventhal  
Lawrence G. Lever  
Mr. and Mrs. Levetown  
Jack P. Levin  
Mr. and Mrs. Jerome Levine  
Randi Levine  
Sondra and Paul Levine  
Ted Levine and Lucia Swanson  
Sandra and Jack Levitt  
Brian Levy and John Duff  
Linda Levy and Deborah Levy  
William and Barbara Lewis  
Edward and Phoebe Lewit  
Paul and Florence R. Libin  
Lucile and Sheldon Lichtblau  
David and Amy Liebowitz  
Judith and Jonathan Lief  
Terri and John Liftin  
Danny and Hadas Lindner  
Mr. and Mrs. Robert Lindsay  
Rae Linefsky  
Judith and Victor Linn  
Naomi and Marvin Lipman  
Judy and Michael Lipstein  
Elizabeth Litt



Joan and Michael Steinberg,  
President of the Harold and Mimi  
Steinberg Charitable Trust

# INDIVIDUAL SUPPORT

## \$2,000+ continued

The Little Family  
 David and Debbie Livingstone  
 Rose Ramey Long  
 Mark Lopez and Leslie Spira Lopez  
 Richard J. Lorenti and Andrew Flatt  
 Ann Z. Lowenthal  
 Mary and Boyd Lowry  
 Diann L'Roy  
 Meredith S. and Isadore Lurman  
 Jodi Lustig and Adam Wattstein  
 Gina MacArthur  
 Arielle Tepper Madover and Ian Madover  
 Reeva and Ezra Mager  
 Brian and Florence Mahony  
 Richard H. M. and Gail Lowe Maidman  
 Lynne and Tom Malone  
 Sam and Emily Mann  
 Liora Manne and Charley Peck  
 Meena R. Mansharamani  
 Laura and Alan Mantell  
 Paul Marcarelli  
 Howard and Ann Marcus  
 Jed Marcus and Jessica Greenbaum  
 Ruth and Michael Margolin  
 Mr. Barry Margolius  
 Anne-Marie and David Mariano  
 Jonathan D. Mariner  
 Marlene Marko and Loren Skeist  
 Steve and Debby Markowitz  
 Andrew Marks and Margaret Foster-Marks  
 Daniel Marlo  
 Stephen and Lee Ann Marquard  
 Deb Marrero  
 Les and Nancy Marshak  
 Marlene and Stu Marshak  
 Beth Starr Martin  
 Joan G. Masket and Sherman Pincus  
 Anne Mathews and Robert Nunziato  
 Jill Matthews and Mabel Miranda  
 Leni and Peter May  
 Enken and Jerry Mayer  
 Joan Mazur and Stephen Kapner  
 Lois and Tom Mazza  
 Kathryn McCarthy  
 Stephanie and Carter McClelland  
 Ruth Anne McCreesh  
 Scott C. McDonald  
 Josephine N. McFadden  
 John McGill  
 Joe McGrath  
 Stephen and Joan McGreevy-Glatz  
 Kathleen Rogers McKeever  
 Marie T. McKellar  
 McKenna Fox  
 Francie McKenzie  
 Ed and Laura McKirdy  
 Gerrie McManus  
 Mr. and Mrs. Michael McManus  
 Mary Meakem  
 Carolyn and Thomas Meehan



Artistic Director's Circle members Alex and Jill Dimitrief  
 and Board Member Sharon Sullivan

Phil and Sherry Meeks  
 Peter Mensch  
 Mrs. Susan Merinoff  
 Marilyn and Martin Metz  
 Edward H. Meyer  
 Melissa Meyer  
 Paula Michtom / Shelley Zoler  
 Ellen and Leonard Milberg  
 Amy Miller and Michael Diamond  
 Susan and Clyde Miller  
 Dr. and Mrs. George Miller  
 Joanna Miller  
 John D. Miller  
 Richard J. and Judy Miller  
 Jean and Lewis Miller  
 Ed and Randi Miller  
 Mr. and Mrs. William J. Miller, Jr.  
 Ellen Minkow and Fred Slater  
 Mr. and Mrs. Gerald D. Mintz  
 Jean Mitchell and Fredrick Cannon  
 Joy Mitosky  
 Karen and Michael Mitri  
 Vickie and Jerry Mizell  
 Barbara and Bob Moncello  
 Mr. Chris Montgomery  
 John and Amy Montuori  
 Helene and Henry Morrison  
 Michael Mosca and David Melancon  
 George B. and Elinor Bunin Munroe  
 Josine and Peter Murano  
 Frank Godchaux and Mark Murashige  
 Jim and Terri Muren  
 Barbara and William Murphy  
 Christene E. Murphy  
 Michael and Marianne Murphy  
 Richard and Anne Murphy  
 James and Kathleen Murtha  
 Mr. Jack Myers  
 June B. Myles  
 Lisa Myles  
 Niclas Nagler and David Alberto Alvarez  
 Mr. and Mrs. Andrew I. Namm  
 Susana M. Namnum, Esq.  
 N.L. Nebeker  
 Richard Neel and Constance Hoguet-Neel  
 Mr. and Mrs. Don H. Nelson  
 Renee Nelson  
 Rona and Randolph M. Nelson  
 Ilona Nemeth  
 Ruth Nerken  
 Michael J. Nesspor  
 Carol and Tom Neuman  
 Jane Jimmy and Ronald Neumann  
 Joseph and Rita Neuschatz  
 Delia and Kevin Neuschatz  
 Michael and Arlene Nevens  
 Jennifer and Jason New  
 Elizabeth Newell  
 Jay Newman and Elissa Kramer  
 Anh-Tuyet Nguyen and Robert Pollock  
 Suzanne and Andrew Nichols  
 David Nickson  
 Nancy A. Niemann  
 Cecilia Norat  
 Peter Norling and Barbara Dildine  
 Clarinda C. Northrop  
 Reba Kasten Nosoff  
 Neil and Lois Nyren  
 Nancy and Morris W. Offit  
 Dorinda J. Oliver  
 Christopher Onieal  
 John Orberg  
 Patricia and Donald Oresman  
 Cindy Ormsby-Doherty  
 Bernard and Trudy Owett  
 Mr. and Mrs. Louis Paglia  
 Nicole and Bruce Paisner  
 James and Sharon Paley  
 Michael and Gabrielle Palitz  
 Chris and Heleen Paparella  
 Isabel Barzun and Gavin Parfit  
 Steve and Diane Parrish  
 Susan and Richard Pasternak  
 Susan and Alan Patricof Foundation  
 Katheryn Patterson and Thomas Kempner, Jr.  
 Amy Paulin and Ira Schuman

# INDIVIDUAL SUPPORT

## \$2,000+ continued

Ralph L. Pellecchio and James C. Wernz, M.D.  
 Mr. and Mrs. John B. Pellegrini  
 Frank and Patti Penski  
 Sheila and Charles Perrin  
 Mr. Richard and Mrs. Rose Petrocelli  
 Melanie Petsch  
 Nancy and Peter Philipps  
 Laura A. Philips and John A. Elliott  
 Dr. and Mrs. Pierson  
 Marnie S. Pillsbury  
 Dr. Morris M. Podolsky and Ms. Laurie  
 Ferber Podolsky  
 Bernice and Irwin Polinsky  
 Melvin Polisher and Joseph Ercolino  
 Ivan Polonsky and Liz Tortorella  
 Erina Polovets  
 Steven and Lisa Pongrass  
 Paula and Greg Powell  
 Wesley R. Powell  
 David Prager  
 Dr. and Mrs. Peter Pressman  
 Mrs. Alix Prince and Mrs. Marilyn Hellinger  
 Judy Lynn Prince  
 Gail Propp  
 Laurie Prose  
 Helaine and Michael Pruzan  
 Carolyn and Bruce Quinn  
 Jennifer and Sidney Rabinowitz  
 Anita and Monroe Rackow  
 Martha J. Radford  
 Meg Raftis and Stillman Brown  
 Dr. Peter Ramwell and Mrs. Marie Ramwell  
 Martin Rapp and James Fox  
 Claudia Re and Gabriel Carras  
 Arthur and Susan Rebell  
 Catherine Redlich and Rob Horwitz  
 Grant and Laurie Reed  
 Lynn and Michael Reichgott  
 Carroll and Ted Reid  
 Mimi Renchner and Mort Golub  
 Michael and Susan Reuben  
 Stephen P. Reynolds and Susan C. Wolf  
 Martha Rhein  
 Steven and Elaine Ricchiuto  
 Frederick and Audrey Riccio  
 Alison and David Rice  
 Shelly and Lester Richter  
 Neal and Sharon Rifkin  
 Iris and Ira Rimerman  
 Ronnie and Dean Ringel  
 Brad and Debbie Ripps  
 Barbara Robbins and Steven Barna  
 Lois Robbins  
 Sylvia and John Rodman  
 Ricki Roer  
 Kathleen M. Rogalle  
 Leslee Rogath  
 Tom Rosato and Jack Garrity  
 Mr. and Mrs. Daniel Rose  
 Dianne Rose and Anthony Paciello

Alan and Leslie Rosen  
 Nancy and Brad Rosenberg  
 Jody and Jerry Rosenberg  
 Neal H. Rosenberg  
 Nancy and David Rosenthal  
 Jonathan and Suzanne Rosenzweig  
 Robert and Diane Roskind  
 Mr. and Mrs. William Rosoff  
 Lois K. Ross  
 Steven and Tammie Ross  
 Ellie Rothschild  
 Dr. and Mrs. Marvin Rotman  
 Janet and Philip Rotner  
 Jan and Lawrence Ruben  
 Mary and Charles Rubens  
 David and Pegeen Rubinstein  
 Carolyn Ruby  
 Cynthia and Richard Rudder  
 Brian and Ginny Ruder  
 Alissa and Robert Rudin  
 Alfred and Ann Ruesch  
 Todd Ruff  
 Victoria Russo  
 Mary and Winthrop Rutherford, Jr.  
 David A. Ruttenger and Ellen R. Marram  
 Ellen T. Ryan  
 Ms. Joan L. and Mr. Reade H. Ryan, Jr.  
 Bonnie and Peter Sacerdote  
 Sandra and James Salierno  
 Arlene and Chester Salomon  
 Wendy B. Samuel  
 The Sanders Law Firm  
 Phyllis A. Santry  
 Elaine Sargent  
 Michael and Donna Sasso  
 Dr. Peter and Mrs. Birgit Satir  
 Dr. Carol Satler & Dr. Frederic Shapiro  
 Karen Savage and Caroline Turoff  
 Schacht Foundation  
 Karen and Charles Schader  
 Diane H. Schafer  
 Betty and Paul Schaffer  
 Noah and Susanna Schankler  
 Burton and Shelah Scherl  
 Jennefer and Alan Schiffman  
 Bernard Schleifer  
 Mr. and Mrs. Michael Schmertzler  
 Nancy and Larry Schneider  
 Ronnie and Steven Schnoll  
 Diane and David Schonberger  
 Lyris A. Schonholz  
 Louise Schraa  
 Linda and Jerry Schultz  
 Dr. Robert and Janie Schwalbe  
 Marvin and Joyce S. Schwartz  
 Sue and Hal Schwartz  
 Herman Schwartzman  
 Maxine Roth Schweitzer  
 Helen Scott  
 Kerstine L. Scritchfield / In loving memory of  
 John A. Scritchfield  
 Emily Segal and Andrew Ellis



**Artistic Director's Circle Member  
 Glen Campbell and guest with  
 Benjamin Scheuer at opening night  
 of THE LION**

Robert L. Seigel  
 Andrew and Barbara Senchak  
 Jennifer and Joel Sendek  
 Alan and Karen Senter  
 Lisa and Michael Senter  
 Leslie Sewell and Jim Jaffe  
 Peter Shaerf and Betsy Scherl  
 Beatrice Shainswit  
 Mr. Richard J. and Mrs. Roberta K. Shaker  
 Mrs. Susan Shanks  
 Nadine Shaoul and Mark Schonberger  
 Alan and Marion Shapiro  
 Harold and Myra Shapiro  
 Michael Shapiro and Marcia J Cardarelli  
 Rita and Larry Shapiro  
 Raghav Sharma & Neha Ghai  
 Dewey Shay  
 John J. Shay, Jr.  
 Kristin Shea and Edward Pinter  
 Paula and Jack Sherman  
 Paula and Adam Sherman  
 Arnold Shertz  
 Indur and Aroon Shivdasani  
 Stephanie and Fred Shuman  
 Fay and Bill Shutzer  
 Eleanor and Arthur Siegel  
 Vivien and Andy Siegel  
 Helen and Stephen Siller  
 Rhonda and Bob Silver  
 Moses Silverman and Betty Robbins  
 Eileen Silvers and Richard Bronstein  
 Ina and Michael Silverstein  
 Esther Simon Charitable Trust  
 Robert H. Sinclair, Ed.D.  
 Carole and Larry Sirovich  
 Steven Sklar and Amy Wallace  
 Robert Skolnick and Susan Bromberg Skolnick  
 Ms. Emmy-Lou Sleeper  
 Mr. Robert Smerling and Dr. Kathryn Smerling  
 Kathleen Smith  
 Lynn and Jeffrey Smith  
 Vincent Smith and Alice Silkworth  
 Mindy and Paul Smolevitz

# INDIVIDUAL SUPPORT

## \$2,000+ continued

Eileen Smyth  
 Daniel M. Snow and Merilee Raines  
 Cyndee and Elliott Socci  
 Lori and David Sochol  
 Emily Soell  
 Elsa and Stephen Solender  
 Liz and Irwin Sollinger  
 Connie, Ellen, and Norman Solomon  
 Herbert and Helene Solomon  
 Jeffrey and Audrey Solomon  
 Michele M. Sonier  
 Chris Sorensen and Sherrie Bayer  
 Patricia and Andrew Soussloff  
 Constance Spahn  
 Dr. and Mrs. Steven Sparr  
 Jeff and Audrey Spiegel  
 Mr. and Mrs. Emerson R. Spry  
 Hon. Elaine Jackson Stack  
 Drs. Richard and Wendy Stapen  
 Renee Starr and Mr. Leonard Taubenblatt  
 Don and Judy Staviv  
 Kristen and Matthew Stein  
 Benjamin and Robin Steinman  
 Marjorie and Michael Stern  
 Debby Stevens  
 Lauren and Kipp Stevens  
 Trevor and Margaret Stewart  
 Evelyn Stock  
 Melissa and Lawrence Stoller  
 Evelyn and Elliott Storch  
 Stephen P. Storfer / Mark DeMoss  
 Charlotte T. Suhler  
 Charles Sullivan  
 James S. Sutterlin  
 Sherrie Sutton and Marvin Roslin  
 Brenda and Leonard Swartz  
 In Memory of Ann L. Swenson  
 Maureen and Paul Swetow  
 Anne and Kipp Sylvester  
 Marcy Syms  
 Deborah Szajngarten  
 Gloria and Philip Talkow  
 Abigail and Shai Tambor  
 Susan Tane  
 Bernice and Joseph Tanenbaum  
 Carol Colby Tanenbaum  
 Enid Tanenhaus and Lewis Segal  
 Peggy and David Tanner  
 Kathryn Taras and Anthony Elitcher  
 Target Health Inc.  
 Arthur G. Taylor  
 Mary Sano and Jon Taylor  
 Linda and Warren Taylor  
 Maria Taylor  
 Yasmine Tebha  
 Stuart and Martha Tell  
 Helen H. Thompson  
 Mr. and Mrs. Clarkson Thornburgh  
 Ms. Marilyn Thypin  
 Laurie M. Tisch

Eileen M. Torrens  
 Ann Towle  
 Rose and Bill Travers  
 Charles and Susan Tribbitt  
 Ellen Trokel  
 Helen S. Tucker/The Gramercy Park Foundation  
 Janine and Hal Tulchin  
 Ruth Turner  
 Caroline Turoff  
 Lori Uddenberg  
 Jonathan T. Ueijo  
 Beth Uffner  
 Dr. Alicia Underwood  
 The Ungar Family Foundation  
 Ann and Thomas Unterberg  
 Ms. Caroline Urvater  
 Caroline Vanderlip and Mark Krentzman  
 Alice Veloudios, M.D.  
 Raymond and Priscilla Vickers  
 Judy Vogel  
 Lee Vogelstein  
 Joan and Bob Volin  
 Fred and Toni von Zuben  
 Agatha and Bob Vorsanger  
 Elizabeth and Harry Wachen  
 Linda Wachinski  
 Judy and Harvey Wacht  
 Svetlana and Herbert Wachtell  
 Leslie and Phillip Wagner  
 Margot Wagner  
 Linda and Daniel Waintrup  
 Joan Wall  
 Andrew Wallach  
 Dr. and Mrs. Marven H. Wallen  
 Angela Walsh  
 Leigh and Robin Walters  
 Robert and Virginia Walther  
 Suellen Ward  
 Lynne and David Warshaw  
 Louise Washer and Mary Clay Flynn  
 Susan Wasserstein and George Sard  
 Dr. Weaver and Rev. Dr. Tanner  
 Dr. and Mrs. John G. Weiger  
 Dr. Jeffrey M. Weil and Dr. Bonnie Eaker-Weil  
 Dr. Terry Weill  
 Eileen and David Weiner  
 Nancy and Robert Weiner  
 Margie and Bryan Weingarten  
 Lois Weinroth  
 Marci K. Weinstein  
 Jay Weiss  
 Peter and Ruth Weiss  
 Roselyn and Walter Weitzner  
 Drs. Sylvia and Howard Welsh  
 Peg and Gary Wendlandt  
 David Wertheimer  
 Kyle White  
 Mr. and Mrs. Malcolm Wiener  
 Gabriel Wiesenenthal and Marcia Kaplan-Mann  
 H. Jeffrey Wilkins  
 Maury and Susan Wilkins

Cici Wilkinson  
 Sandy and John Willen  
 Joanne and Fred Wilson  
 David Wimmer and Michelle Jones  
 Beverly and Arnold Winston  
 Patricia A. Winter  
 Margo Wintersteen  
 Debi and Steven Wisch  
 Gary and Amanda Wolf  
 Sherry Wolfe  
 Richard and Nicole Wolff  
 Tom Wolff and Tim Collins  
 Frances L. Wolfson  
 Marc Wolinsky and Barry Skovgaard  
 Billy F.B. Wong and Stephanie Gordon  
 Jeffrey and Vera Wurst  
 Hans and Francine Wybenga  
 Laura Yorke and Henry Lodge  
 Dr. Bruce and Phyllis Young  
 Steven Petrillo and Edwin Young  
 Nicole Lafayette Young  
 Mr. P. Scott Zachek and Mr. J. Lucio Galese  
 Susan J. Zachman and David J. Phillips  
 Barbara and David Zalaznick  
 Charles Zegar and Merryl Snow Zegar  
 Deborah J. Zeigler  
 Eryn C. Zell  
 Barrie Sue Zicherman  
 Ronda Shaw Zients and Alan B. Zients  
 Bob and Ellen Zimmerman  
 Monib and Shazia Zirvi  
 Arthur and Connie Zuckerman  
 Dr. Felice Zwas  
 Leah Jacobs and Arnulf Zweig  
 and 60 anonymous donors

## \$1,000+

Nick Adamo\*  
 Ellen Abrams  
 Jennifer Adams and Charles Allen  
 Edward A. Allen and Amanda Miller Allen  
 Gregory A. Allgeyer  
 Elinor Appleby



Artistic Director's Circle Members  
 Rosa and Robert Gellert

# INDIVIDUAL SUPPORT



**Board Secretary Barbara Fife and Mark Fife**

## **\$1,000+ continued**

Barbara and Stanley Arkin  
 Susan Arnes and William Arndt  
 Douglas and Elena Atkin  
 Mitchell Auslander\*  
 H. Thomas Axt  
 Barbara A. Baird  
 Andrea Barbieri  
 Carol and Tom Beam  
 Maureen Becker  
 Clayton V. Benn  
 Jody and Brian Berger  
 Elaine S. Bernstein  
 Dr. Jonine Bernstein  
 Gregory Bienstock  
 Ann Bigelow  
 Roberta Bloomfield  
 Ronni Rubin Bolger  
 Marilyn A. Boll  
 Ms. Ruth Brandt  
 Jackie Brook  
 Arthur Brooks  
 Karin Brown  
 Steven and Joy Bunson\*  
 Barbara Bye  
 Luigi Caiola and Sean McGill  
 Christopher Campbell/Palace Production Center\*  
 Beverly C. Campbell  
 Anne Z. Casey  
 Rosanne Cash  
 Cynthia Chalker  
 John S. Clark  
 Carolyn Cohen and Alan Dershowitz  
 Louis Colaianni  
 Michael L. Connell and James W. Johnson  
 Jennifer and Gordon Cooke  
 Robert Crews  
 Mary Charlotte Cummings  
 Sally Etherton Cummins

James Danner  
 Lawrence Davidson  
 Mary J. Davis  
 Sara De De Castro  
 Ashley DeSimone  
 Elizabeth Mangum DeStefano  
 Carol Dickenson  
 Joseph Dixon, III  
 Paula Dominick  
 Elizabeth Doon  
 Jill Drew  
 Ryan Dudley\*  
 Helen Dumphrey and Jane Dalton  
 Christ Economos\*  
 Jim Edwards  
 Phillip Eisenberg  
 Rebecca and Martin Eisenberg  
 The Honorable Annette S. Elstein  
 Judy and Toni Evnin  
 Bruce R. Ewing\*  
 Jessica Farr\*  
 Marc Flanagan and Cathy O'Connor  
 Anne Fleming  
 Barbara Fogel  
 Erica Fraser  
 Ruth W. Friendly  
 Ellen Fujikawa  
 Jean Fullen  
 R. G. Gaffney  
 Renata D. Gallagher  
 Antoinette Gallo  
 Carole A. Gardiner  
 Steve & Donna Gartner\*  
 Lou and Rachel Genevie  
 Lynn and Paul George  
 Carol Gertz  
 Barbara F. Gibbs  
 Heath Kern Gibson  
 Elaine Gilbert

Glen Gillen\*  
 Laura R. Goddard  
 Nancy Godleski  
 Ann M. Goodbody  
 Marilyn Goodman  
 Michael S. Gordon  
 J. Governale  
 Meghan Graper and Keith Banhazl  
 Annette Green  
 Laura Grosshans and Jordyn Buchanan  
 Adrienne Gruberg  
 Dean J. Haas  
 Richard Habib  
 Carol Hall  
 Dede Hapner  
 Mariska Hargitay\*  
 Dr. Gwen Harris  
 Kathleen Harris  
 Dr. Catherine Carlisle Hart  
 Laura and Mike Hartstein  
 Todd E. Heaton, MD  
 Lynette Helfstein  
 Peter Hermann\*  
 Caroline Herz  
 Scott Hinman  
 Alison Holtzschue  
 Patricia Hopkins  
 Tamar and Richard Howson  
 Katherine B. Hoyt  
 Denise and Al Hurley  
 David Jaffe  
 Adrienne Jakubowski  
 Eric M. Javits, Jr.  
 Mark Jofe  
 Bruce Jordan  
 Geraldine Jordan  
 Carol-Jeanette Jorgensen  
 Janet and Howard Kagan\*  
 Marvin Kalisch  
 Ted Kaplan and Bobbie Woronow  
 Susan A. Karger  
 Henry and Elaine Kaufman Foundation  
 Ms. Maureen Kay  
 Joan Kedziora, M.D.  
 J. Scott Klein  
 Judith A. Kleiner  
 James Klosty  
 Peter Knopp  
 D.L. King  
 Betsy Kotcher  
 Julia Marie Kubis  
 Hildy Kuryk and Jarrod Bernstein  
 Doranne and Richard Lackman  
 Catherine Ladnier  
 Denis Langevin  
 Casey Larose  
 Sara H. Lathrop  
 Theresa Wood Lavine  
 Sandi B. Lawless  
 Samantha Lazarus  
 Kathleen I. Lazzarra  
 Kate Lear and Jon LaPook

# INDIVIDUAL SUPPORT



Artistic Director's Circle members Dan Healy (far left), Barbara and Eric Hippeau (right) and guests at the opening night for TALES FROM RED VIENNA

## \$1,000+ continued

Arthur Liederman  
 Arthur E. Lindner  
 Carol Lipis  
 Jane Macan  
 Marla W. Maidenbaum  
 Arlene Maidman  
 John Major\*  
 Anne Maltz  
 Amy Leppo Mandell  
 P and D Manis  
 Anne S. Mason and Bruce F. Grabell  
 Terry Mass  
 Sandra Mates  
 Sol Matsil  
 The Maurer Family Foundation\*  
 Jonathan Maurer and Gretchen Shugart\*  
 Anders and Carlene Maxwell  
 Christine M. McBryan  
 Melinda McLellan  
 Barb Medlin  
 Ms. Etan Merrick  
 Lisa Mezzetti  
 Pam and Bill Michaelcheck  
 Florence Miller Memorial Fund\*  
 Jane Ann Miller  
 Judith Miller  
 Kenneth F. Miller  
 Didier J. Moatti  
 Liza Morehouse  
 Dorothy and Max Moss  
 Victoria Myers

Nadine T. Nader  
 Sue and Jordan Nager  
 Daniel A. Napolitano  
 Sheila Nevins  
 Valerie Nicholas  
 Aaron M. Nieman  
 Theodore Nixon\*  
 Barbara O'Connell  
 Robert and Lisa O'Connor  
 David C. Olstein  
 Lisa Orberg\*  
 Frank and Bonnie Orlowski\*  
 Dr. Antonio Ortega  
 Carol Ostrow\*  
 Arabhi Panchacharam  
 Jane W. Parver  
 Nellie Perera  
 Marina Perry  
 Antonia Pew  
 Jerome and Christine Ponz  
 Kathy and Allan Rogers  
 Dr. Catherine Roland  
 Janice H. Romley  
 Judith Rosenberger  
 Jed and Hallie Rosenthal  
 Dawn Rosso  
 Sandra A. Roy and Danielle Scoff  
 Leonard Rubin, M.D.  
 John and Cindy Vaccaro and Françoise Saas  
 Kathryn and Duane Sachs  
 Barry Sacker  
 Stagedoor Manor

Patricia Sanders  
 Ben and Carrie Sanders  
 Sara Selbert Savov  
 The Ralph and Luci Schey Foundation\*  
 The Schloss Family Foundation\*  
 Jane and Richard Schmitt  
 Carole and Malcolm Schwartz  
 Peggy and Niles Schwartz  
 Christine Seaver  
 Alan Secrest  
 Deb Siefert and Chris David  
 Lenore D. Silver  
 Susan Silver  
 Alexandra Simons  
 Karen Slovin  
 George S. Smith, Jr.  
 David and Patricia Brown Specter  
 Sherri Spicer  
 Marlene Lamm Spigner  
 Barbara Steiner - In Memory of Dolores Fiorito  
 Cheryl M. Sternberg  
 Carol and Daniel Strickberger  
 Lucie Subak  
 John Rampone and Peter Sylvester  
 Karen N. Tell  
 John Thomopoulos\*  
 Drs. Albert and Patricia Thrower  
 Alison Townsend  
 Joan and Norman Treistman  
 James S. Turley\*  
 Ann Vetrano  
 Patricia Vitanza  
 Yoko Wakabayashi  
 Gary A. Walker  
 Lisa Walsh  
 David Warmflash  
 Margot B. Weinstein  
 Rebecca Weis and William Stein  
 Nancy Weiss  
 Elizabeth Wetherell  
 Joan Whipple  
 Doris Kamp White  
 Hedi H. White  
 Tamara White  
 Arthur Wiegand  
 Isabelle Winkles  
 Penny Winship  
 Mark and Barbara Wolff  
 Natalie Wood  
 John J. Yarmick  
 Jeffrey Young  
 Gloria Zeche  
 Dr. Suzanne Zelman  
 and seven anonymous donors

Listings reflect gifts made between July 1, 2013 and June 30, 2014. We apologize for any inaccuracies; please advise the Development Office of corrections at (212) 399-3040.

# 2013-14 FINANCIAL NOTE HIGHLIGHTS

## **Organization:**

Manhattan Theatre Club, Inc. and Subsidiary ("MTC") consists of Manhattan Theatre Club, Inc. (a not-for-profit corporation) and its wholly owned subsidiary MTC Productions, Inc. (a for-profit corporation). The subsidiary's income and total expenses have been included in the operating fund.

## **Tax Status:**

MTC was granted tax exempt status under Section 501(c)(3) of the Internal Revenue Code and is not classified as a private foundation.

## **Gifts and Contributions:**

Gifts and contributions received without donor imposed restrictions are recorded as unrestricted.

Gifts and contributions received with donor imposed restrictions which stipulate the period of use or the purpose of the gift are recorded as temporarily restricted. Temporarily restricted contributions that meet donor imposed restrictions within the fiscal year are treated as unrestricted gifts.

When stipulations related to the passage of time or purpose of the gifts are satisfied, temporarily restricted net assets are classified as unrestricted and reported in the statement of activities as having satisfied restrictions.

Gifts and contributions received with donor imposed restrictions which cannot be satisfied by the passage of time or any action by MTC are recorded as permanently restricted.

Earnings from investment activities are governed by donor restrictions or, in the case of undesignated funds, MTC's spending policy. Any excess investment earnings over the spending policy are reflected as temporarily restricted.

## **Functional Allocation of Expenses:**

The costs of providing the various programs and other activities have been summarized on a functional basis in the statement of activities. Accordingly, certain costs have been allocated among the programs and supporting services benefited. Program expenses include theatrical and related activities, occupancy, audience development and publicity costs.

## **Fund Accounting:**

The accounts of the Organization are maintained in accordance with the principles of fund accounting. Under fund accounting, resources for various purposes are classified for accounting and reporting purposes into funds established according to their nature and purpose. Separate accounts are maintained for each fund; however, in the accompanying combined financial statements, funds that have similar characteristics have been combined into fund groups. Fund balances are classified on the Combined Statement of Financial Position as unrestricted, temporarily restricted, or permanently restricted net assets based on the absence or existence and type of donor-imposed restrictions.

## **Net Assets:**

Unrestricted net assets consist of the following board designated funds: Operating Fund, Extension Fund,

Production Transfer Fund, Named Funds, Plant Fund, Working Capital/Cash Reserve Fund and Friedman Fund.

Temporarily restricted net assets consist of contributions with donor imposed restrictions of either purpose or time.

Permanently restricted net assets consist of the following donor restricted funds: Production Reserve Fund, Kaplan Fund, Lucille Lortel Fund, Jeffcoat Fund, MTC Endowment Funds and Education Endowment Fund.

## **Non-Monetary Transactions:**

MTC receives donated goods and services which are recorded at the value placed by the donors on the date of donation. For the year ended June 30, 2014, the fair market value of those in-kind services totaled \$457,685 which has been reflected in the accompanying financial statements as contributions and grants, non-government support.

*A copy of the annual financial report may be obtained, upon request, from MTC or from the Office of the Attorney General, Charities Bureau, 120 Broadway, New York, New York, 10271. It is also available on our website.*

# CONSOLIDATED STATEMENT OF FINANCIAL POSITION

	2014				2013			
	UNRESTRICTED	TEMPORARILY RESTRICTED	PERMANENTLY RESTRICTED	TOTAL	UNRESTRICTED	TEMPORARILY RESTRICTED	PERMANENTLY RESTRICTED	TOTAL
<b>Assets</b>								
Current Assets								
Cash and cash equivalents	\$ 3,633,646	\$ 443,919	-	\$ 4,077,565	\$ 3,363,807	\$ 790,177	\$ -	\$ 4,153,984
Investments	7,236,906	1,156,433	-	8,393,339	6,632,764	-	-	6,632,764
Accounts receivable	272,855	-	-	272,855	182,394	-	-	182,394
Unconditional promises to give	1,303,130	2,539,387	-	3,842,517	1,399,557	2,972,263	-	4,371,820
Unamortized production costs	213,796	-	-	213,796	523,808	-	-	523,808
Prepaid expenses and other current assets	508,964	-	-	508,964	391,758	-	-	391,758
Total Current Assets	13,169,297	4,139,739	-	17,309,036	12,494,088	3,762,440	-	16,256,528
Unconditional promises to give	-	978,359	-	978,359	47,935	1,665,930	-	1,713,865
Estimated amounts due from split-interest agreements	-	172,637	-	172,637	-	172,637	-	172,637
Investments	-	-	-	-	-	-	1,664,458	1,664,458
Property and equipment, at cost, net of accumulated depreciation and amortization	23,664,661	-	-	23,664,661	23,396,921	-	-	23,396,921
Restricted certificate of deposit	120,742	-	-	120,742	120,742	-	-	120,742
Security deposits	82,280	-	-	82,280	85,280	-	-	85,280
<b>Total Assets</b>	<b>37,036,980</b>	<b>5,290,735</b>	<b>1,664,458</b>	<b>43,992,173</b>	<b>36,144,966</b>	<b>5,601,007</b>	<b>1,664,458</b>	<b>43,410,431</b>
<b>Liabilities and Net Assets</b>								
Liabilities								
Current Liabilities								
Accounts payable and accrued expenses	955,078	-	-	955,078	701,072	-	-	701,072
Salaries and other payroll related payables	400,242	-	-	400,242	272,130	-	-	272,130
Deferred subscription revenue	3,653,377	-	-	3,653,377	3,283,714	-	-	3,283,714
Deferred revenue - other	99,127	-	-	99,127	82,954	-	-	82,954
Total Current Liabilities	5,107,824	-	-	5,107,824	4,339,870	-	-	4,339,870
Vacation payable	346,254	-	-	346,254	340,259	-	-	340,259
Deferred rent credit	115,664	-	-	115,664	57,832	-	-	57,832
Deferred compensation plan payable	541,786	-	-	541,786	300,000	-	-	300,000
Total Liabilities	6,111,528	-	-	6,111,528	5,037,961	-	-	5,037,961
Net Assets								
Unrestricted	7,260,791	-	-	7,260,791	7,710,084	-	-	7,710,084
Board Designated	23,664,661	-	-	23,664,661	23,396,921	-	-	23,396,921
Unrestricted Plant Fund	-	5,290,735	-	5,290,735	-	5,601,007	-	5,601,007
Temporarily Restricted	-	-	-	-	-	-	-	-
Permanently Restricted	-	-	1,664,458	1,664,458	-	-	1,664,458	1,664,458
Total Net Assets	30,925,452	5,290,735	1,664,458	37,880,645	31,107,005	5,601,007	1,664,458	38,372,470
<b>Total Liabilities and Net Assets</b>	<b>\$ 37,036,980</b>	<b>\$ 5,290,735</b>	<b>\$ 1,664,458</b>	<b>\$ 43,992,173</b>	<b>\$ 36,144,966</b>	<b>\$ 5,601,007</b>	<b>\$ 1,664,458</b>	<b>\$ 43,410,431</b>

# CONSOLIDATED STATEMENT OF ACTIVITIES

	2014				2013			
	UNRESTRICTED	TEMPORARILY RESTRICTED	PERMANENTLY RESTRICTED	TOTAL	UNRESTRICTED	TEMPORARILY RESTRICTED	PERMANENTLY RESTRICTED	TOTAL
<b>Operating Activities</b>								
<b>Other Revenue and Public Support</b>								
Other Revenue	\$ 15,019,019	\$ -	\$ -	\$ 15,019,019	\$ 11,926,092	\$ -	\$ -	\$ 11,926,092
Box office and subscription income	105,768	-	-	105,768	152,605	-	-	152,605
Enhancements and co-productions	225,221	-	-	225,221	209,709	-	-	209,709
Subsidiary rights and royalty income	347,691	-	-	347,691	188,294	-	-	188,294
Spending policy distribution	253,635	-	-	253,635	279,393	-	-	279,393
Rental income	313,755	-	-	313,755	246,108	-	-	246,108
Facility fee income	106,012	-	-	106,012	97,044	-	-	97,044
Education income	43,583	-	-	43,583	134,302	-	-	134,302
Other income	16,412,684	-	-	16,412,684	13,233,547	-	-	13,233,547
<b>Total Other Revenue</b>								
Public Support	176,665	-	-	176,665	173,083	-	-	173,083
Governments	1,154,117	244,500	-	1,398,617	1,517,035	1,529,290	-	3,046,325
Foundations	245,589	50,000	-	295,589	269,952	30,000	-	299,952
Corporations	4,482,896	450,597	-	4,933,493	5,269,094	1,527,196	-	6,796,290
Individuals	457,685	-	-	457,685	590,095	-	-	590,095
Donated services and materials	2,238,686	-	-	2,238,686	1,835,671	-	-	1,835,671
Less: Direct costs of fundraising events	(516,915)	-	-	(516,915)	(471,350)	-	-	(471,350)
Net assets released from restriction	1,187,753	(1,187,753)	-	-	400,000	(400,000)	-	-
Individuals	600,049	(600,049)	-	-	60,500	(60,500)	-	-
Foundations	25,000	(25,000)	-	-	9,644,080	2,625,986	-	12,270,066
Corporations	10,051,525	(1,067,705)	-	8,983,820	22,877,627	2,625,986	-	25,503,613
<b>Total Public Support</b>								
<b>Total Other Revenue and Public Support</b>	\$ 26,466,209	(1,067,705)	-	\$ 25,398,504	\$ 22,877,627	\$ 2,625,986	-	\$ 25,503,613
<b>Expenses</b>								
Program Services	23,867,947	-	-	23,867,947	21,147,565	-	-	21,147,565
Supporting Services	1,625,328	-	-	1,625,328	1,478,308	-	-	1,478,308
Management and General	2,147,280	-	-	2,147,280	1,724,670	-	-	1,724,670
Fundraising	3,772,608	-	-	3,772,608	3,202,978	-	-	3,202,978
<b>Total Supporting Services</b>								
<b>Total Expenses</b>	\$ 27,640,555	-	-	\$ 27,640,555	\$ 24,350,543	-	-	\$ 24,350,543
Increase (Decrease) in Net Assets Before Non-Operating Activities	(1,174,346) *	(1,067,705)	-	(2,242,051)	(1,472,916) *	2,625,986	-	1,153,070
<b>Non-Operating Activities</b>								
Investment income	1,244,051	-	257,673	1,501,724	188,294	-	-	188,294
Excess earnings	(955,002)	1,156,433	(201,431)	900,030	(188,294)	-	-	(188,294)
Spending policy distribution	(291,449)	-	(56,242)	(347,691)	(188,294)	-	-	(188,294)
Net proceeds from insurance	91,193	-	-	91,193	-	-	-	-
Capital contributions	62,959	442,041	-	505,000	-	1,000,000	-	1,000,000
Capital released from restriction	841,041	(841,041)	-	-	-	1,000,000	-	1,000,000
<b>Total Non-Operating Activities</b>	\$ 992,793	757,433	-	\$ 1,750,226	\$ -	\$ 1,000,000	-	\$ 1,000,000
Increase (decrease) in net assets	(181,553)	(310,272)	-	(491,825)	(1,472,916)	3,625,986	-	2,153,070
Net assets, beginning of year	31,107,005	5,601,007	1,664,458	38,372,470	32,579,921	1,975,021	1,664,458	36,219,400
<b>Net Assets, End of Year</b>	\$ 30,925,452	\$ 5,290,735	\$ 1,664,458	\$ 37,880,645	\$ 31,107,005	\$ 5,601,007	\$ 1,664,458	\$ 38,372,470

\* Include depreciation expense of \$845,022 (2014) and \$816,437 (2013).

# LOOKING AHEAD TO 2014-15

## *Broadway – Samuel J. Friedman Theatre*

### ***The Country House***

World Premiere by **Donald Margulies**

Directed by **Daniel Sullivan**

*September 9, 2014- November 23, 2014*



*The Country House* follows Anna Patterson (**Blythe Danner**), the matriarch of a brood of famous and longing-to-be-famous creative artists who have gathered at their Berkshires summer house during the Williamstown Theatre Festival. But when the weekend takes an unexpected turn, everyone is forced to improvise... inciting a series of simmering jealousies, romantic outbursts and passionate soul-searching.

---

### ***Constellations***

Broadway Premiere by **Nick Payne**

Directed by **Michael Longhurst**

*December 16, 2014 – March 15, 2015*



Oscar nominee **Jake Gyllenhaal** (*Brokeback Mountain*, *Nightcrawler*) and two-time Olivier Award winner **Ruth Wilson** (“The Affair”, “Luther”) make their MTC and Broadway debuts in this mind-bending, romantic journey that begins with a simple encounter between a man and a woman. But what happens next defies the boundaries of the world we think we know—delving into the infinite possibilities of their relationship and raising questions about the difference between choice and destiny.

---

### ***Airline Highway***

Broadway Premiere by **Lisa D’Amour**

Directed by **Joe Mantello**

*April 1, 2015 – June 14, 2015*



In the parking lot of The Hummingbird, a once-glamorous motel on New Orleans’ infamous Airline Highway, a group of friends gather. A rag-tag collection of strippers, hustlers, and philosophers have come together to celebrate the life of Miss Ruby, an iconic burlesque performer who has requested a funeral before she dies. The party rages through the night as old friends resurface to pay their respects. *Airline Highway* is a boisterous and moving ode to the outcasts that make life a little more interesting.

# LOOKING AHEAD TO 2014-15

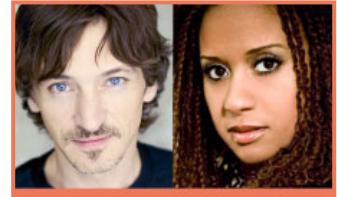
## *Off-Broadway – New York City Center | Stage I*

### ***Lost Lake***

World Premiere by **David Auburn**

Directed by **Daniel Sullivan**

*October 21, 2014 – December 21, 2014*



The lakeside rental Veronica (**Tracie Thoms**) has managed to afford is a far cry from the idyllic getaway she and her children so desperately need. And the disheveled property owner, Hogan (**John Hawkes**), has problems of his own—problems that Veronica is inevitably—and irrevocably—pulled into. An engrossing and revealing portrait of two strangers bound together by circumstance, *Lost Lake* is a vivid new work about the struggle for connection in an imperfect world.

---

### ***The World of Extreme Happiness***

World Premiere by **Frances Ya-Chu Cowhig**

Directed by **Eric Ting**

*February 3, 2015 – April 5, 2015*



Unwanted from the moment she's born, Sunny (**Jennifer Lim**) is determined to escape her life in rural China and to forge a new identity in the city. As naïve as she is ambitious, Sunny views her new job in a grueling factory as a stepping stone to untold opportunities. When fate casts her as a company spokeswoman at a sham PR event, Sunny's bright outlook starts to unravel in a series of harrowing and darkly comedic events, as she begins to question a system enriching itself by destroying its own people.

---

### ***The Swing of the Sea***

World Premiere by **Richard Greenberg**

Directed by **Lynne Meadow**

*May 26, 2015 – July 26, 2015*



Tony® award winning playwright Richard Greenberg (*The Assembled Parties*, *Take Me Out*) and Manhattan Theatre Club's award-winning Artistic Director Lynne Meadow (*Wit*, *The Commons of Pensacola*) reunite for a world-premiere play that marks the 11<sup>th</sup> collaboration between Mr. Greenberg and MTC. Patriarch Max has died, leaving behind two sons, Brett and Alec and a lover Vivi. All three reunite for one evening in Vivi's New York apartment. Secrets, passions, and ghosts of the past emerge for this trio as each of them faces an uncertain future.

# LOOKING AHEAD TO 2014-15

## *The Studio at Stage II – Harold and Mimi Steinberg New Play Series*

*The Studio at Stage II* is Manhattan Theatre Club's initiative at New York City Center – Stage II. Now in its third year, two of MTC's 2014-15 season productions will be staged in this space as part of *The Studio at Stage II – Harold and Mimi Steinberg New Play Series*, which places writers in a supportive, creative environment where process reigns and major artistic risk-taking is encouraged.

All tickets to *The Studio at Stage II* are \$30 in order to ensure that these works are available to the widest possible, most diverse audiences.

### *Off-Broadway – New York City Center | Stage II*

#### *By the Water*

World Premiere by **Sharyn Rothstein**

Directed by **Hal Brooks**

November 4, 2014 – December 7, 2014



Hurricane Sandy has just ravaged the lifelong home of Marty and Mary Murphy. But the storm has ripped apart more than just the walls: with their neighbors too devastated to stay, the couple's beloved Staten Island community is in danger of disappearing. Determined to rebuild, Marty wages a campaign to save his neighborhood and his home, but when the Murphys' sons arrive to help their parents dig out, past betrayals come rushing to the surface. With fierce compassion and poignant humor, *By the Water* reminds us that the very powers that tear us apart can also bring us together.

The Spring 2015 production of *The Studio at Stage II – Harold and Mimi Steinberg New Play Series* has yet to be announced.

---

WRITTEN AND DESIGNED BY Erin Mooney

EDITED BY Patricia Leonard, Lynne Randall

CONTRIBUTORS: Andrew Darcey, Emily Fleisher, Josh Martinez-Nelson, Amy Harris, Scott Kaplan, Lindsay Sac, Amy Loe

ARTWORK PHOTOGRAPHY AND DESIGN BY SpotCo

PRODUCTION PHOTOS FOR THE SNOW GEESE, TAKING CARE OF BABY, COMMONS OF PENSACOLA, OUTSIDE MULLINGAR, TALES FROM RED VIENNA, AND WHEN WE WERE YOUNG AND UNAFRAID BY Joan Marcus

PRODUCTION PHOTOS FOR CASA VALENTINA AND THE LION BY Matthew Murphy

OPENING NIGHT PHOTOS FOR THE SNOW GEESE, COMMONS OF PENSACOLA, OUTSIDE MULLINGAR, TALES FROM RED VIENNA, CASA VALENTINA, WHEN WE WERE YOUNG AND UNAFRAID AND THE LION BY Bruce Glikas

WINTER BENEFIT AND SPRING GALA PHOTOGRAPHY BY Lyn Hughes

EDUCATION PHOTOGRAPHY: Allison Brockhouse, Emily Hamburger, Wade T. Handy, Amy Harris, and Gabriella Napoli

STIEFEL READING SERIES PHOTOGRAPHY BY Elizabeth Rothman

Manhattan Theatre Club | 311 West 43rd Street | 8th Floor | New York, NY 10036

(212) 399-3000 | [www.ManhattanTheatreClub.com](http://www.ManhattanTheatreClub.com)